

# RNAV (GPS) RWY 17

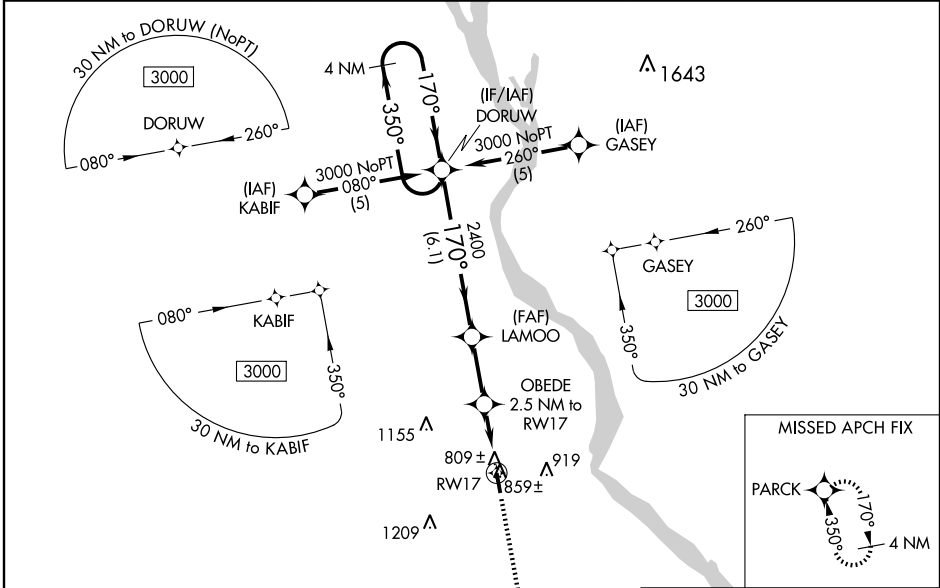
HANNIBAL RGNL (H.A.E.)

|                                 |                        |  |
|---------------------------------|------------------------|--|
| WAAS<br>CH <b>62812</b><br>W17A | APP CRS<br><b>170°</b> | Rwy Idg<br>TDZE <b>4400</b><br><b>769</b><br>Apt Elev <b>769</b> |
|---------------------------------|------------------------|--|

**▼** For uncompensated Baro-VNAV systems, LNAV/VNAV NA below -16°C (4°F) or above 34°C (130°F).  
**▲ NA** DME/DME RNP-0.3 NA. Visibility reduction by helicopters NA.  
 When local altimeter setting not received, use Quincy altimeter setting and increase all DA 41 feet, all MDA 60 feet, increase LNAV Cat C visibility ¼ mile. Baro-VNAV and VDP NA when using Quincy altimeter setting.

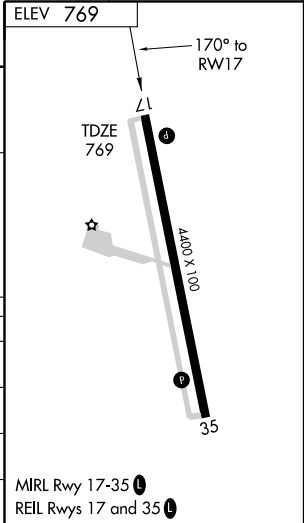
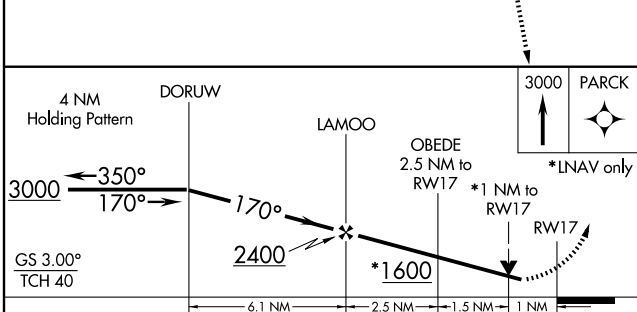
MISSED APPROACH: Climb to 3000 direct PARCK and hold.

|                          |  |                                |
|--------------------------|--|--------------------------------|
| AWOS-3<br><b>120.775</b> | KANSAS CITY CENTER<br><b>135.525 319.9</b> | UNICOM<br><b>122.8(CTAF) 0</b> |
|--------------------------|--|--------------------------------|



NC-3, 22 OCT 2009 to 19 NOV 2009

NC-3, 22 OCT 2009 to 19 NOV 2009



| CATEGORY     | A       | B            | C                       | D  |
|--------------|---------|--------------|-------------------------|----|
| LPV DA       | 1019-1  | 250 (300-1)  |                         | NA |
| LNAV/VNAV DA | 1079-1¼ | 310 (400-1¼) |                         | NA |
| LNAV MDA     | 1120-1  | 351 (400-1)  |                         | NA |
| CIRCLING     | 1260-1  | 491 (500-1)  | 1260-1½<br>491 (500-1½) | NA |

MIRL Rwy 17-35 0  
REIL Rwy 17 and 35 0