

# RNAV (GPS) RWY 23

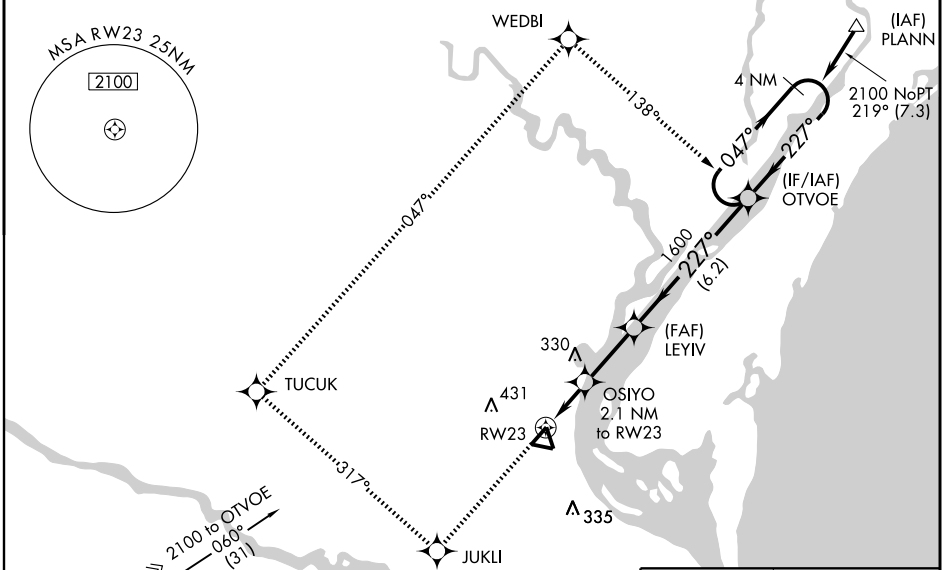
GEORGETOWN COUNTY (GGE)

WAAS CH <b>58108</b> <b>W23A</b>	APP CRS <b>227°</b>	Rwy Idg TDZE <b>37</b> Apt Elev <b>39</b>	<b>5000</b>
----------------------------------------	------------------------	-------------------------------------------------	-------------

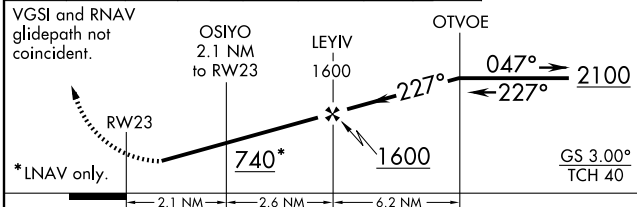
**NA** Baro-VNAV NA when using Myrtle Beach Intl altimeter setting. For uncompensated Baro-VNAV systems, LNAV/VNAV NA below -15° C (5° F) or above 48° C (118° F). DME/DME RNP-0.3 NA. Visibility reduction by helicopters NA. When local altimeter setting not received, use Myrtle Beach Intl altimeter setting and increase all DA 70 feet and all MDA 80 feet. Increase LPV visibility ¼ mile all Cats, LNAV/VNAV visibility ¼ mile all Cats, and LNAV and Circling visibility Cat. D ¼ mile.

**MISSED APPROACH:** Climb to 2100 direct JUKLI and via 317° track to TUCUK and via 047° track to WEDBI and via 138° track to OTVOE and hold.

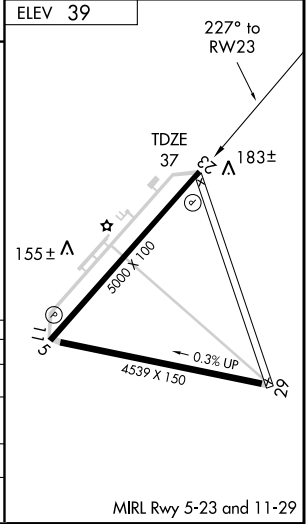
AWOS-3 <b>118.275</b>	MYRTLE BEACH APP CON ★ <b>127.4 257.95</b>	CLNC DEL (GCO) <b>119.7</b>	UNICOM <b>123.0</b> (CTAF)
--------------------------	-----------------------------------------------	--------------------------------	-------------------------------



2100 ↑	JUKLI	TRK 317°	TUCUK	TRK 047°	WEDBI	TRK 138°	OTVOE	4 NM Holding Pattern
--------	-------	----------	-------	----------	-------	----------	-------	----------------------



CATEGORY	A	B	C	D
LPV DA		357-1¼	320 (400-1¼)	
LNAV/VNAV DA		507-1¾	470 (500-1¾)	
LNAV MDA	440-1	403 (500-1)	440-1¼	403 (500-1¼)
CIRCLING	520-1	481 (500-1)	520-1½	800-2½ 481 (500-1½) 761 (800-2½)



SE-2, 22 OCT 2009 to 19 NOV 2009

SE-2, 22 OCT 2009 to 19 NOV 2009

MIRL Rwy 5-23 and 11-29