

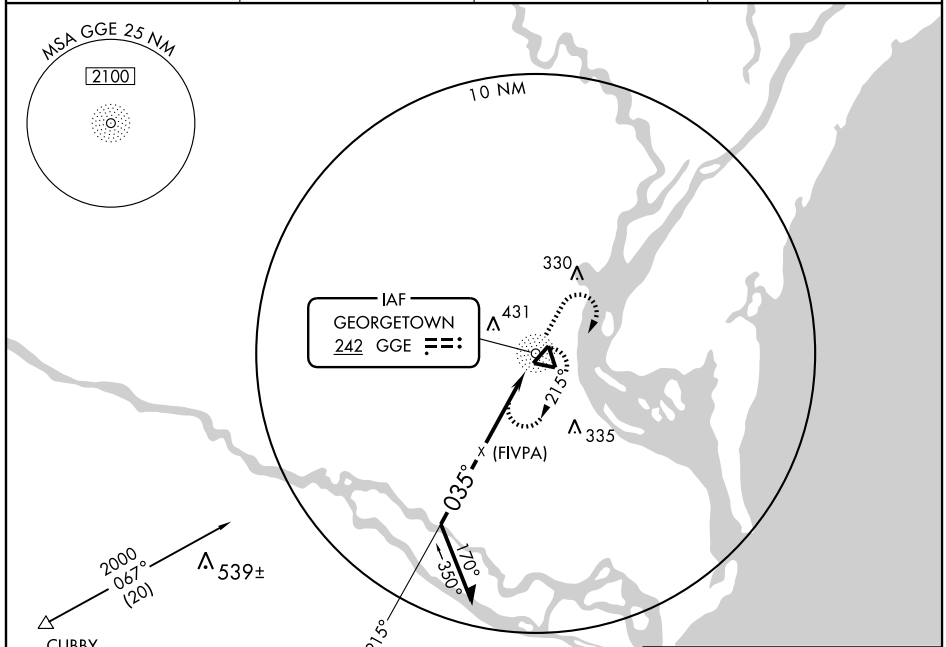
# NDB or GPS RWY 5

GEORGETOWN COUNTY (GGE)

NDB GGE	APP CRS	Rwy Idg	5000
<b>242</b>	<b>035°</b>	TDZE	<b>39</b>
		Apt Elev	<b>40</b>

**▼** If local altimeter not received, use Myrtle Beach Intl altimeter setting.  
**▲** NA MISSED APPROACH: Climb to 1600 then right turn direct GGE NDB and hold.

AWOS-3 <b>118.275</b>	MYRTLE BEACH APP CON* <b>127.4 257.95</b>	CLNC DEL (GCO) <b>119.7</b>	UNICOM <b>123.0 (CTAF)</b>
--------------------------	--	--------------------------------	-------------------------------

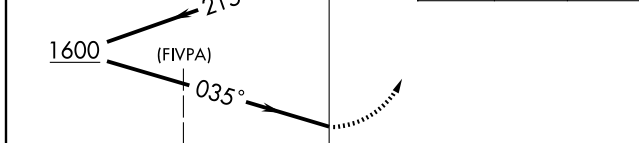


SE-2, 22 OCT 2009 to 19 NOV 2009

SE-2, 22 OCT 2009 to 19 NOV 2009



Remain within 10 NM	NDB	1600	215°	035°	3.6 NM	0.4 NM
---------------------	-----	------	------	------	--------	--------



CATEGORY	A	B	C	D
S-5	520-1	481 (500-1)	520-1¼ 481 (500-1¼)	520-1½ 481 (500-1½)
CIRCLING	520-1	480 (500-1)	520-1½ 480 (500-1½)	740-2¼ 700 (700-2¼)
MYRTLE BEACH INTL ALTIMETER SETTING				
S-5	640-1	601 (700-1)	640-1¾ 601 (700-1¾)	640-2 601 (700-2)
CIRCLING	640-1	600 (600-1)	640-1¾ 600 (600-1¾)	860-2¾ 820 (900-2¾)

