

COZAD, NEBRASKA

AL-6243 (FAA)

# VOR RWY 13

COZAD MUNI (CZD)

VOR OZB <b>109.0</b>	APP CRS <b>123°</b>	Rwy Idg <b>5000</b>
		TDZE <b>2502</b>
		Apt Elev <b>2502</b>

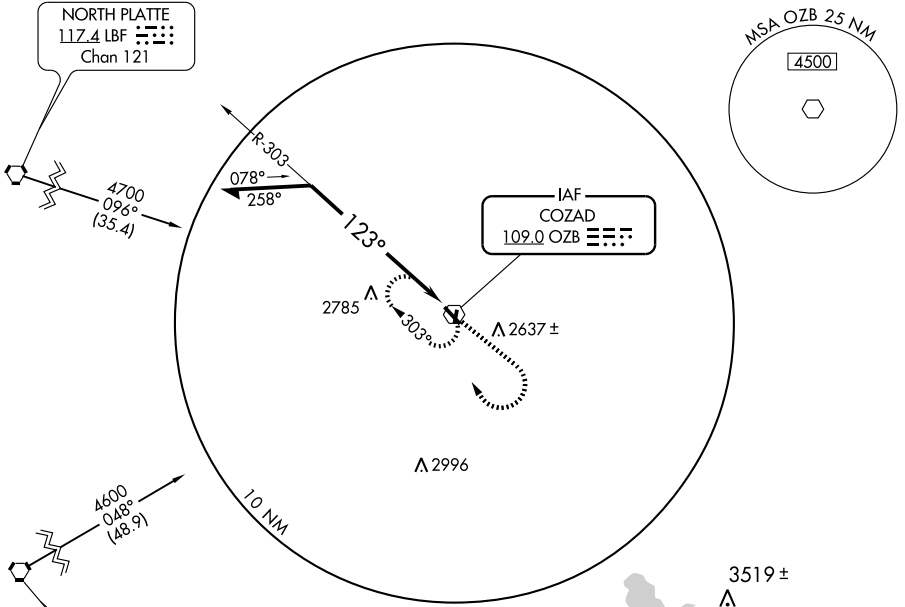
**▽** Use Lexington altimeter setting; if not received, use North Platte altimeter setting and increase all MDAs 80 feet.

**MISSED APPROACH:** Climb to 4500 then right turn direct OZB VOR and hold.

LEXINGTON AWOS-3  
**121.025**

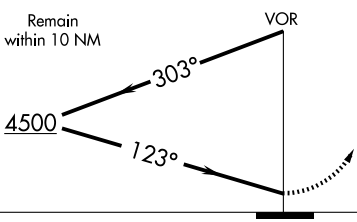
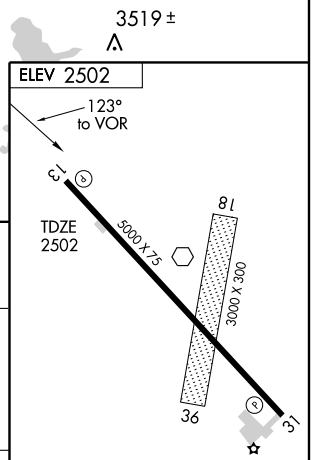
DENVER CENTER  
**132.7 397.85**

UNICOM  
**122.8 (CTAF) 0**



NC-2, 22 OCT 2009 to 19 NOV 2009

NC-2, 22 OCT 2009 to 19 NOV 2009



4500			OZB
			109.0

CATEGORY	A	B	C	D
S-13	3140-1	638 (700-1)	3140-1¾ 638 (700-1¾)	NA
CIRCLING	3140-1	638 (700-1)	3140-1¾ 638 (700-1¾)	NA

MIRL Rwy 13-31 0

Knots	60	90	120	150	180
Min:Sec					

COZAD, NEBRASKA  
Amdt 2 07242

40°52'N-100°00'W

# COZAD MUNI (CZD)

## VOR RWY 13