

LACON, ILLINOIS

AL-6240 (FAA)

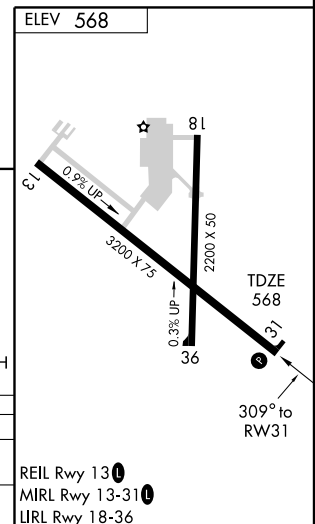
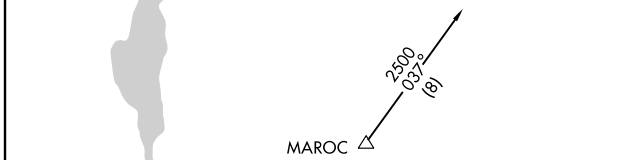
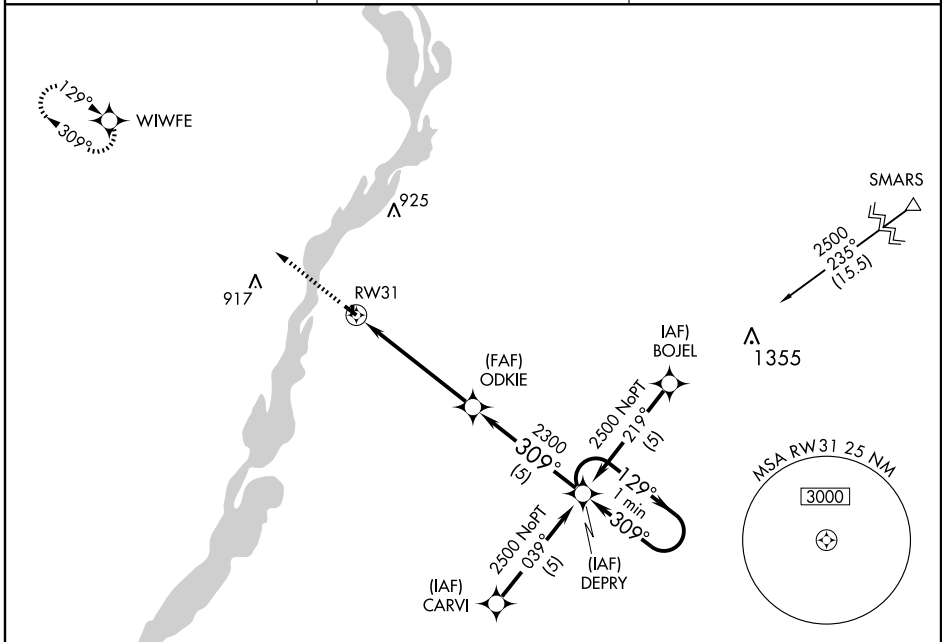
GPS RWY 31

LACON/ MARSHALL COUNTY (C75)

APP CRS	Rwy Idg	3200
309°	TDZE	568
	Apt Elev	568

⚠ MISSED APPROACH: Climb to 2500 direct WIWFE WP and hold.

AWOS-3 119.425	CHICAGO CENTER 124.55 398.9	UNICOM 122.8 (CTAF)
--------------------------	---------------------------------------	-------------------------------



CATEGORY	A	B	C	D
S-31	1060-1	492 (500-1)	1060-1¼ 492 (500-1¼)	NA
CIRCLING	1100-1	532 (600-1)	1100-1½ 532 (600-1½)	NA

REIL Rwy 13	Ⓧ
MIRL Rwy 13-31	Ⓧ
LIRL Rwy 18-36	Ⓧ

LACON, ILLINOIS
Orig 08157

41°01'N-89°23'W

LACON/ MARSHALL COUNTY (C75)

GPS RWY 31

EC-3, 22 OCT 2009 to 19 NOV 2009

EC-3, 22 OCT 2009 to 19 NOV 2009