

LACON, ILLINOIS

AL-6240 (FAA)

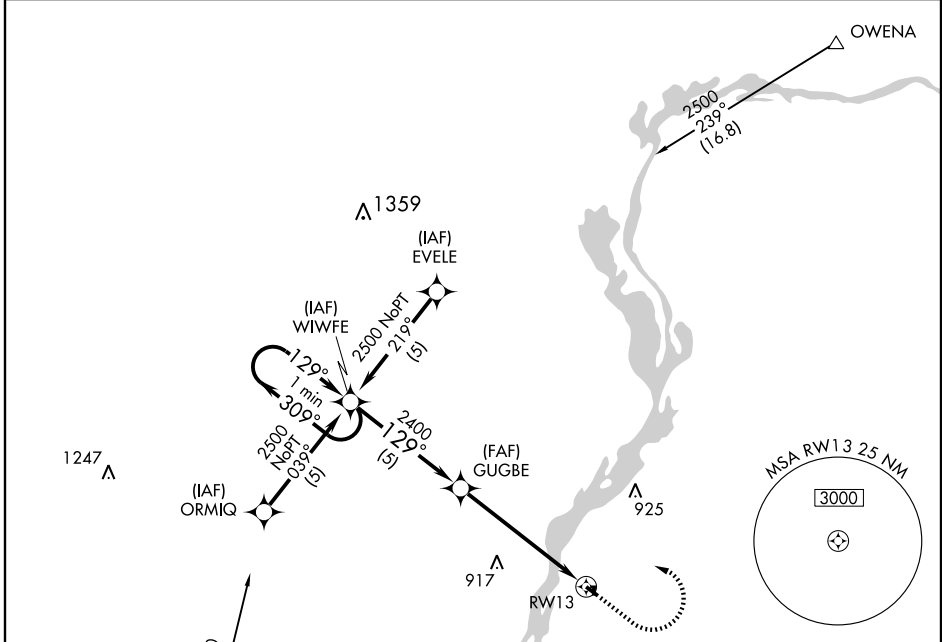
GPS RWY 13

LACON/MARSHALL COUNTY (C75)

APP CRS	Rwy Idg	3200
129°	TDZE	568
	Apt Elev	568

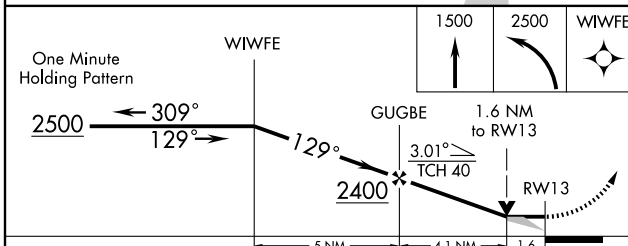
<p>▼ ▲NA</p>	<p>MISSED APPROACH: Climb to 1500, then climbing left turn to 2500 direct WIWFE WP and hold.</p>
--------------------------------	--

<p>AWOS-3 119.425</p>	<p>CHICAGO CENTER 124.55 398.9</p>	<p>UNICOM 122.8 (CTAF) 0</p>
----------------------------------	---	---



EC-3, 22 OCT 2009 to 19 NOV 2009

EC-3, 22 OCT 2009 to 19 NOV 2009



CATEGORY	A	B	C	D
S-13	1080-1 512 (600-1)		1080-1½ 512 (600-1½)	NA
CIRCLING	1100-1 532 (600-1)		1100-1½ 532 (600-1½)	NA

ELEV 568

129° to RWY 13

TDZE 568

REIL Rwy 13 0

MIRL Rwy 13-31 0

LIRL Rwy 18-36

LACON, ILLINOIS
Orig 08157

41°01'N-89°23'W

LACON/MARSHALL COUNTY (C75)

GPS RWY 13