

RNAV (RNP) Y RWY 31

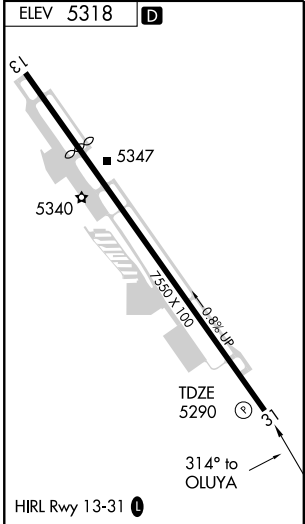
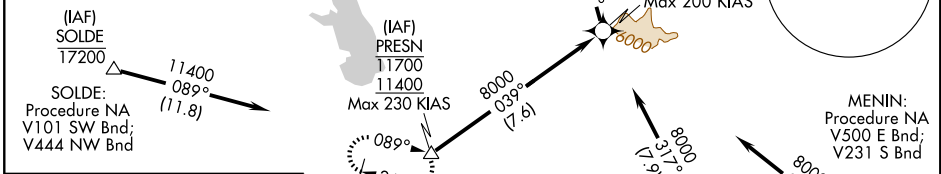
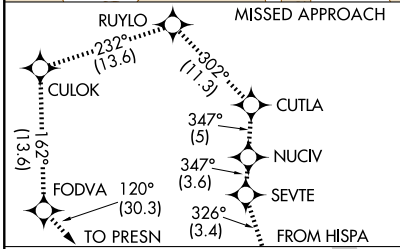
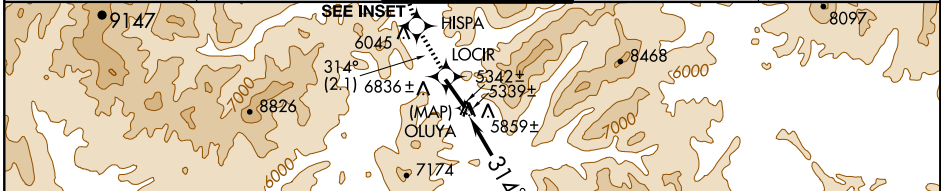
HAILEY/FRIEDMAN MEMORIAL (SUN)

APP CRS 314°	Rwy Idg 6631
TDZE 5290	Apt Elev 5318

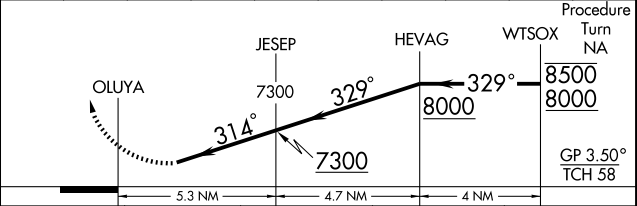
GPS required. When VGSI inoperative, procedure NA at night.
 For uncompensated Baro-VNAV systems, procedure NA below -25°C (-14°F) or above 37°C (99°F).
 Missed approach requires RNP less than 1.0 and minimum climb of 330 feet per NM to 14500. Visibility reduction by helicopters NA.
 Final approach course offset 5.0°.

MISSED APPROACH: Climb to 15000 via 314° track to LOCIR, 314° track to HISPA, 326° track to SEVTE, 347° track to NUCIV, 347° track to CUTLA, 302° track to RUYLO, 232° track to CULOK, 162° track to FODVA, 120° track to PRESN and hold.

ATIS 128.225	SALT LAKE CENTER 118.05 353.0	HAILEY TOWER* 125.6 (CTAF) 0	GND CON 121.7	UNICOM 122.95
------------------------	---	--	-------------------------	-------------------------



15000	LOCIR	HISPA	SEVTE	NUCIV	CUTLA	RUYLO	CULOK	FODVA	PRESN
	314° track	314° track	326° track	347° track	347° track	302° track	232° track	162° track	120° track



CATEGORY	A	B	C	D
RNP 0.30	DA	6264-3	974 (1000-3)	NA

SPECIAL AIRCRAFT & AIRCREW AUTHORIZATION REQUIRED

NW-1, 22 OCT 2009 to 19 NOV 2009

NW-1, 22 OCT 2009 to 19 NOV 2009