

HAILEY, IDAHO

AL-6239 (FAA)

NDB/DME HLE <b>220</b>	APP CRS <b>330°</b>	Rwy ldg TDZE <b>N/A</b>	<b>N/A</b>
DME Chan <b>25</b>		Apt Elev <b>5313</b>	<b>N/A</b>

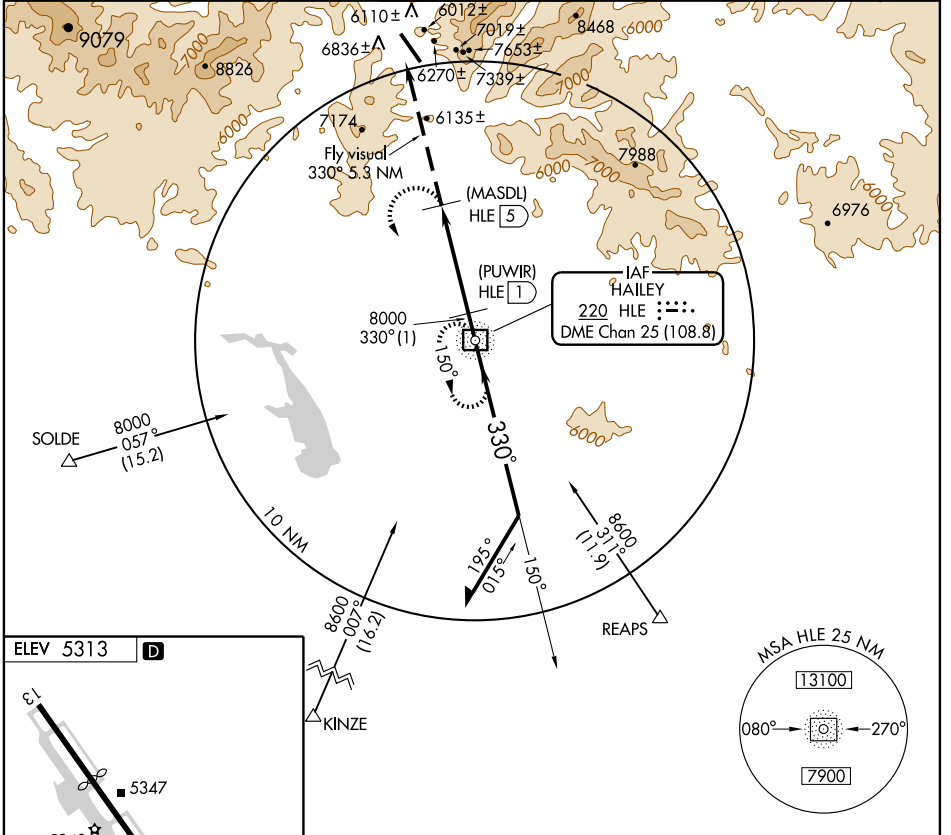
# NDB/DME or GPS-A

HAILEY/FRIEDMAN MEMORIAL (SUN)

**⚠** Occasional ADF needle swings away from the final approach course are to be expected north of missed approach point.  
**⚠ NA** When control tower closed, procedure not authorized.  
 Procedure not authorized at night.

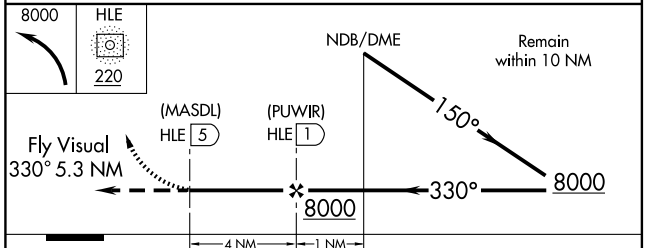
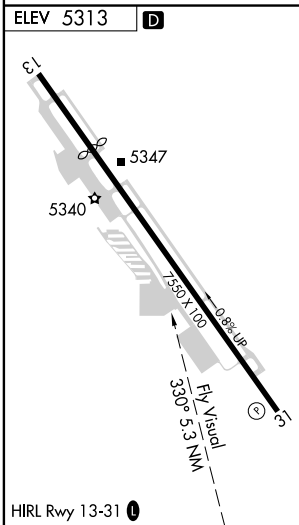
MISSED APPROACH: Left turn to 8000 direct HLE NDB/DME and hold.

ATIS <b>128.225</b>	SALT LAKE CENTER <b>118.05 353.0</b>	HAILEY TOWER * <b>125.6 (CTAF) 0</b>	GND CON <b>121.7</b>	UNICOM <b>122.95</b>
------------------------	---	---	-------------------------	-------------------------



NW-1, 22 OCT 2009 to 19 NOV 2009

NW-1, 22 OCT 2009 to 19 NOV 2009



CATEGORY	A	B	C	D
CIRCLING	8000-5	2687 (2700-5)		NA

HAILEY, IDAHO  
 Orig-B 08325

43° 30' N - 114° 18' W

HAILEY/FRIEDMAN MEMORIAL (SUN)  
**NDB/DME or GPS-A**