

AURELIA TWO DEPARTURE (RNAV)

TAKE-OFF OBSTACLE NOTES

Rwy 13: Multiple trees beginning 763' from DER, 3' right of centerline, up to 100' AGL/5345' MSL.

TAKE-OFF MINIMUMS

Rwy 13: Standard with minimum climb of 400' per NM to 6700.
ATC climb of 400' per NM to 7300.

Rwy 31: NA, Obstacles.

NOTE: GPS Required.

NOTE: RNAV 1.

GND CON

121.7

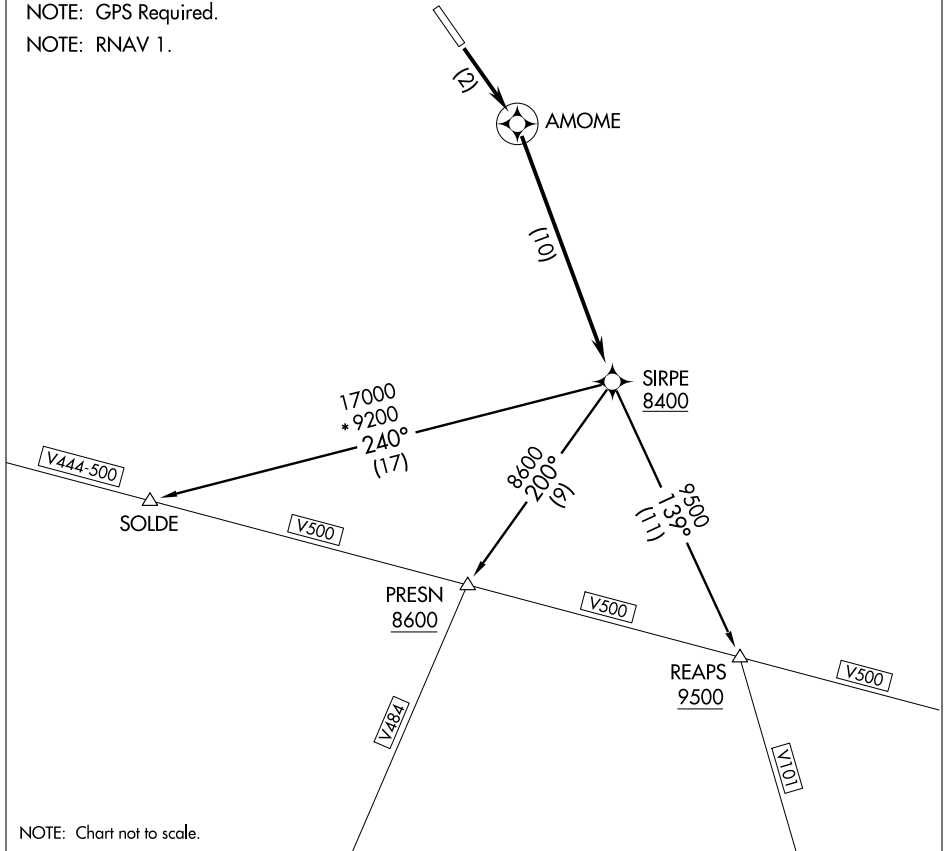
HAILEY TOWER★

125.6

SALT LAKE CENTER

118.05 353.0

UNICOM 122.95



NW-1, 22 OCT 2009 to 19 NOV 2009

NW-1, 22 OCT 2009 to 19 NOV 2009

NOTE: Chart not to scale.



DEPARTURE ROUTE DESCRIPTION

TAKE-OFF RUNWAY 13: Climb direct AMOME, then climbing right turn direct SIRPE to cross SIRPE; cross SIRPE at or above 8400, Thence....via (Transition).

PRESN TRANSITION (AUREL2.PRESN)

REAPS TRANSITION (AUREL2.REAPS)

SOLDE TRANSITION (AUREL2.SOLDE)

AURELIA TWO DEPARTURE (RNAV)