

# RNAV (GPS) RWY 36

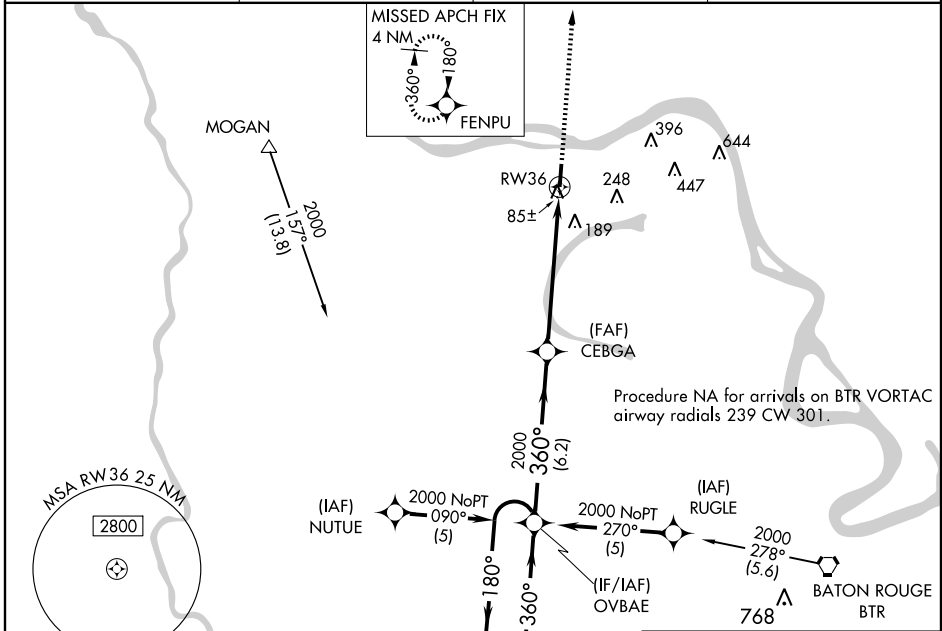
NEW ROADS/FALSE RIVER RGNL (H.Z.R.)

WAAS CH <b>42607</b> <b>W36A</b>	APP CRS <b>360°</b>	Rwy Idg TDZE Apt Elev	<b>5003</b> <b>37</b> <b>40</b>
--	------------------------	-----------------------------	---------------------------------------

**▼** Inoperative table does not apply. BARO-VNAV NA.  
**▲ NA** Use Baton Rouge altimeter setting; when not received, use Lafayette Rgnl altimeter setting and increase all DA 43 feet and all MDA 60 feet, increase LPV and LNAV/VNAV all Cats and Circling Cat C visibility 1/4 mile.

**ODALS**   
**MISSED APPROACH:** Climb to 1900 direct FENPU and hold.

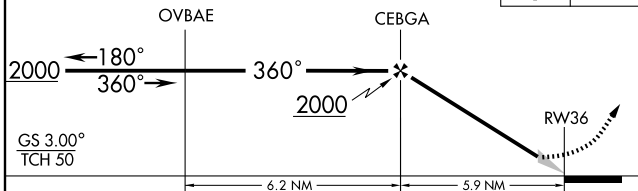
BATON ROUGE ASOS <b>125.2</b>	BATON ROUGE APP CON ★ <b>120.3 278.3</b>	GCO <b>135.075</b>	UNICOM <b>122.8 (CTAF) 0</b>
----------------------------------	---	-----------------------	---------------------------------



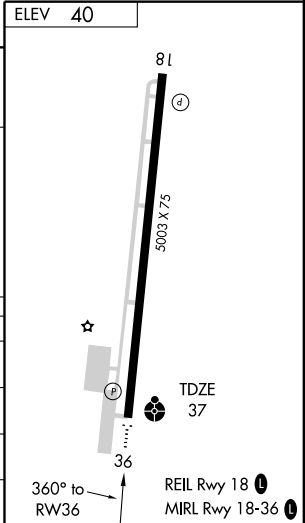
ELEV 40

4 NM Holding Pattern

1900 FENPU



CATEGORY	A	B	C	D
LPV DA	358-1		321 (400-1)	
LNAV/VNAV DA	396-1 1/4		359 (400-1 1/4)	
LNAV MDA	560-1	523 (600-1)	560-1 1/2 523 (600-1 1/2)	560-1 1/4 523 (600-1 1/4)
CIRCLING	560-1	520 (600-1)	600-1 1/2 560 (600-1 1/2)	600-2 560 (600-2)



SC-4, 22 OCT 2009 to 19 NOV 2009

SC-4, 22 OCT 2009 to 19 NOV 2009