

OZARK, ARKANSAS

AL-6237 (FAA)

VOR/DME or GPS-A  
OZARK-FRANKLIN COUNTY (7M5)

VORTAC FSM <b>110.4</b> Chan <b>41</b>	APP CRS <b>064°</b>	Rwy Idg TDZE Apt Elev <b>N/A</b> <b>N/A</b> <b>648</b>
--	------------------------	---

Use Fort Smith altimeter setting.  
NA

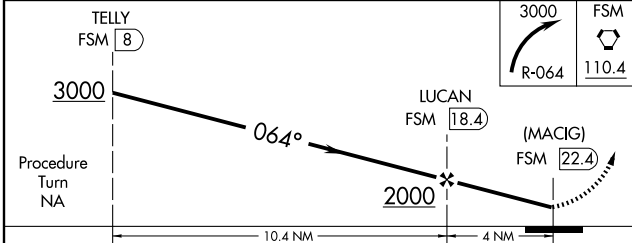
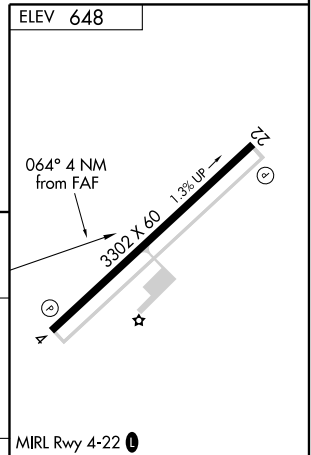
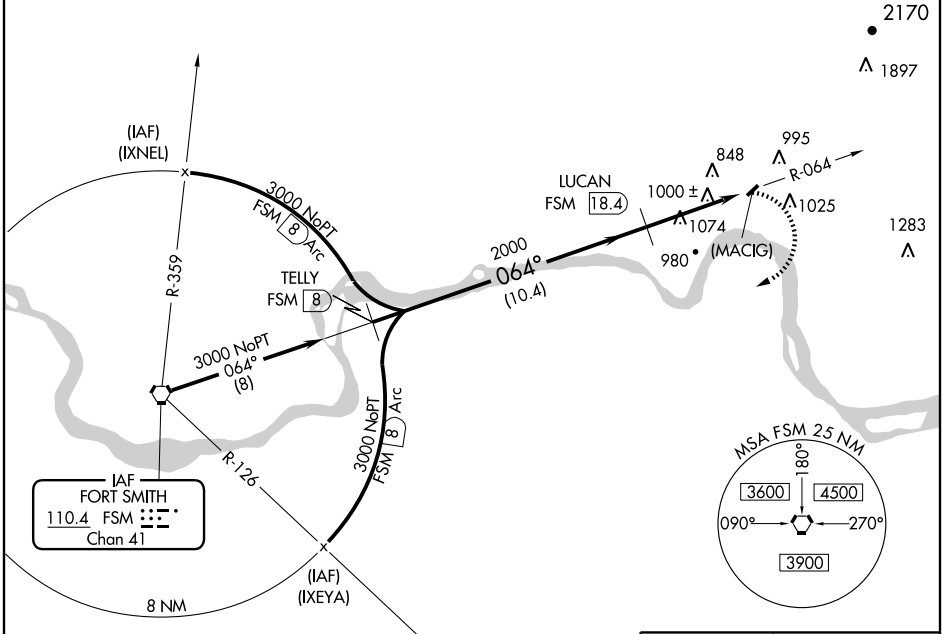
MISSED APPROACH: Climbing right turn to 3000 via R-064 to FSM VORTAC.

RAZORBACK APP CON ★  
**120.9 343.75**

UNICOM  
**122.8 (CTAF)**

SC-1, 22 OCT 2009 to 19 NOV 2009

SC-1, 22 OCT 2009 to 19 NOV 2009



CATEGORY	A	B	C	D
CIRCLING	1440-1 794 (800-1)	1440-1¼ 794 (800-1¼)	1440-2¼ 794 (800-2¼)	NA

Knots	60	90	120	150	180
Min:Sec					

OZARK, ARKANSAS  
Amdt 3A 03303

35°31' N-93°50' W

OZARK-FRANKLIN COUNTY (7M5)  
VOR/DME or GPS-A