

WEST UNION, OHIO

AL-6236 (FAA)

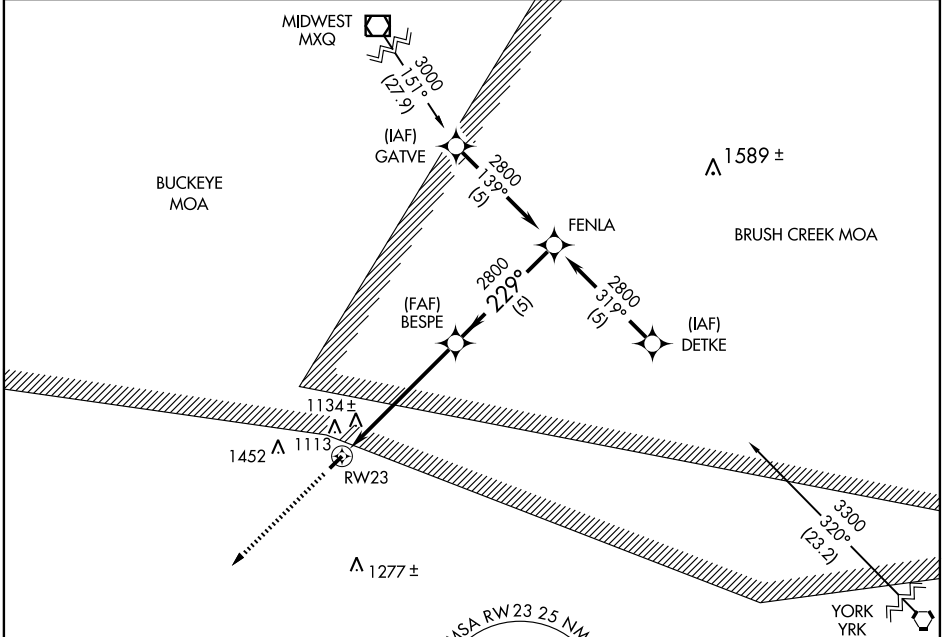
RNAV (GPS) RWY 23

WEST UNION/ALEXANDER SALAMON (AMT)

APP CRS	Rwy Idg	3762
229°	TDZE	896
	Apt Elev	896

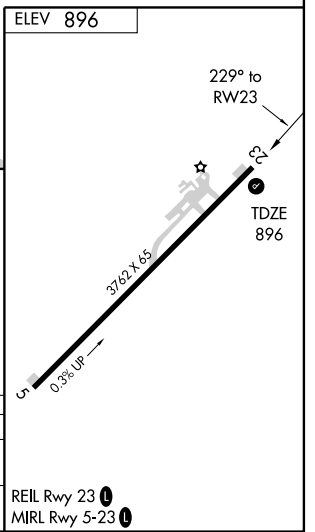
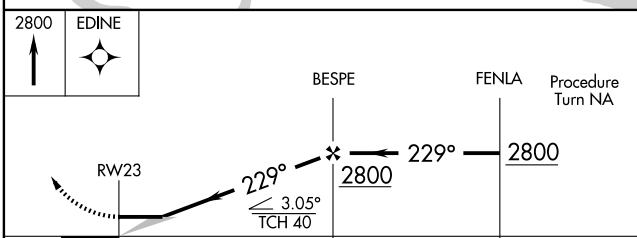
▼ Use Flemingsburg, Kentucky altimeter setting.
▲ NA DME/DME RNP-0.3 NA. MISSED APPROACH: Climb to 2800 direct EDINE WP and hold.

FLEMINGSBURG AWOS-3 118.125	INDIANAPOLIS CENTER 124.225 327.05	UNICOM 122.8 (CTAF) 0
---------------------------------------	--	---------------------------------



EC-2, 22 OCT 2009 to 19 NOV 2009

EC-2, 22 OCT 2009 to 19 NOV 2009



CATEGORY	A	B	C	D
LNAV MDA	1440-1	544 (600-1)	1440-1½ 544 (600-1½)	NA
CIRCLING	1600-1	704 (800-1)	1600-2 704 (800-2)	NA

WEST UNION, OHIO
Orig-A 08213

38°51'N - 83°34'W

RNAV (GPS) RWY 23