

WEST UNION, OHIO

AL-6236 (FAA)

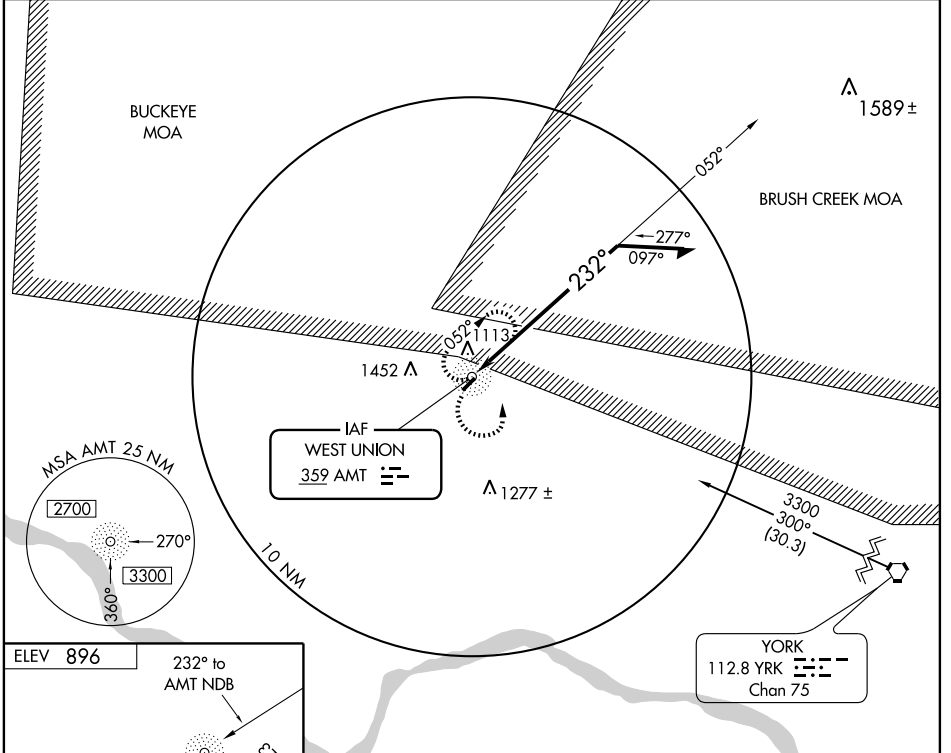
NDB RWY 23

WEST UNION/ALEXANDER SALAMON (AMT)

NDB AMT 359	APP CRS 232°	Rwy Idg TDZE Apt Elev	3762 896 896
-----------------------	------------------------	-----------------------------	---

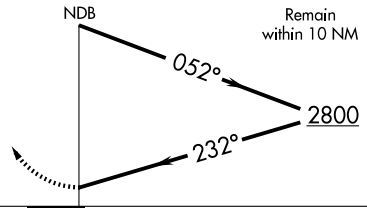
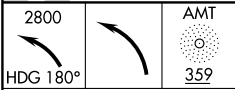
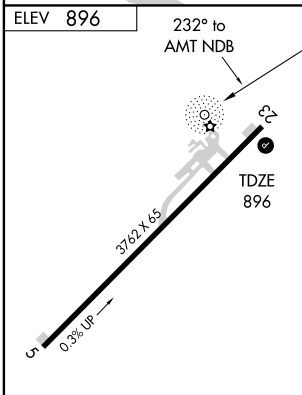
▽ Use Flemingsburg, Kentucky altimeter setting.
△ NA MISSED APPROACH: Climbing left turn to 2800 via heading 180°, then left turn direct AMT NDB and hold.

FLEMINGSBURG AWOS-3 118.125	INDIANAPOLIS CENTER 124.225 327.05	UNICOM 122.8 (CTAF) 0
---------------------------------------	--	---------------------------------



EC-2, 22 OCT 2009 to 19 NOV 2009

EC-2, 22 OCT 2009 to 19 NOV 2009



REL Rwy 23 **0**
MIRL Rwy 5-23 **0**

Knots	60	90	120	150	180
Min:Sec					

CATEGORY	A	B	C	D
S-23	1660-1 764 (800-1)	1660-1¼ 764 (800-1¼)	1660-2¼ 764 (800-2¼)	NA
CIRCLING	1660-1 764 (800-1)	1660-1¼ 764 (800-1¼)	1660-2¼ 764 (800-2¼)	NA

WEST UNION, OHIO
Amdt 4A 08213

WEST UNION/ALEXANDER SALAMON (AMT)
38°51'N - 83°34'W

NDB RWY 23