

WICHITA, KANSAS

AL-6234 (FAA)

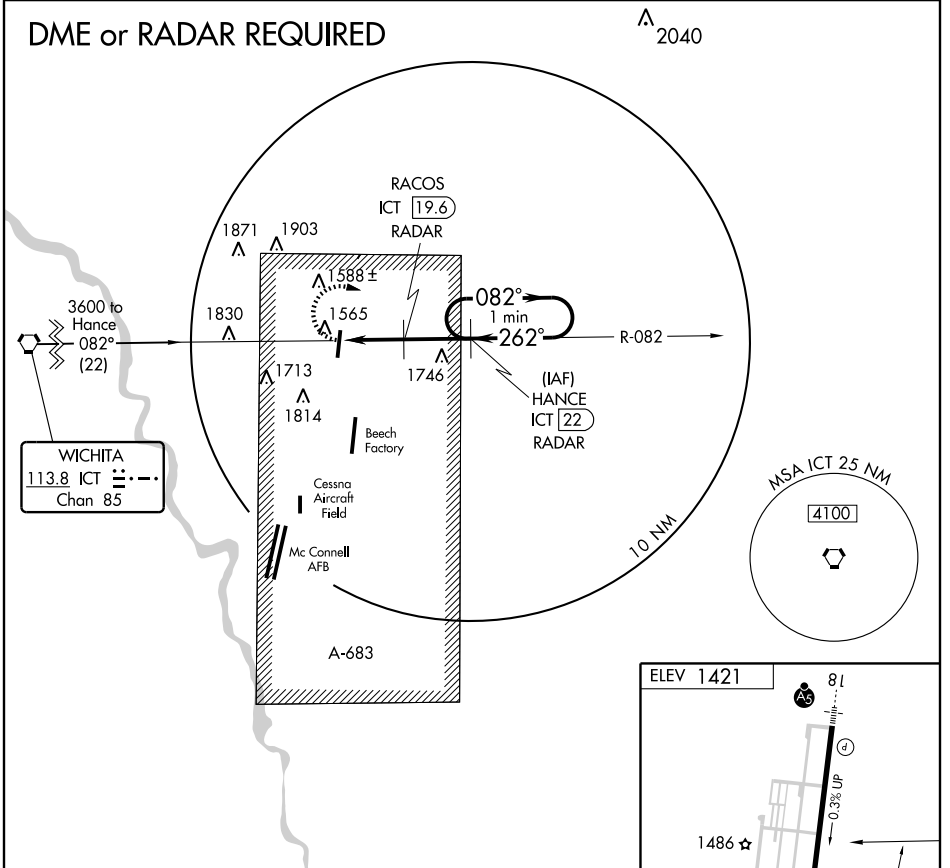
VOR-A

WICHITA/COLONEL JAMES JABARA (A.A.O)

VORTAC ICT 113.8 Chan 85	APP CRS 262°	Rwy Idg TDZE Apt Elev 1421	N/A N/A 1421
--	------------------------	--	--------------------

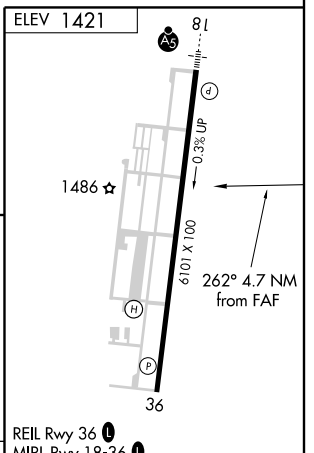
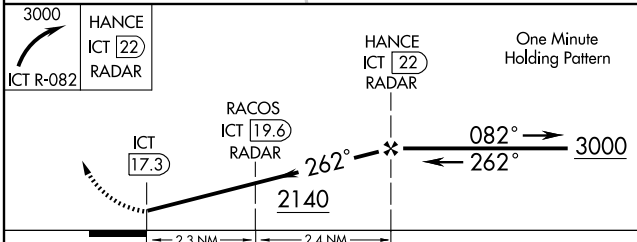
⚠ If local altimeter setting not received, use Wichita Mid-Continent altimeter setting and increase all MDAs 40 feet. MISSED APPROACH: Climbing right turn to 3000 via ICT R-082 to HANCE/ICT 22 DME/RADAR and hold.

ASOS 134.025	WICHITA APP CON 134.8 269.1	CLNC DEL 125.0	UNICOM 122.7 (CTAF) Ⓛ
------------------------	---------------------------------------	--------------------------	--



NC-2, 22 OCT 2009 to 19 NOV 2009

NC-2, 22 OCT 2009 to 19 NOV 2009



CATEGORY	A	B	C	D		
CIRCLING	1880-1 459 (500-1)	1880-1 459 (500-1)	1880-1½ 459 (500-1½)	2120-2¼ 699 (700-2¼)		
	FAF TO MAP 4.7 NM					
	Knots	60	90	120	150	180
	Min:Sec	4:42	3:08	2:21	1:53	1:34

WICHITA, KANSAS
Amdt 4A 09183

37° 45' N-97° 13' W

WICHITA/COLONEL JAMES JABARA (A.A.O)

VOR-A