

WICHITA, KANSAS

AL-6234 (FAA)

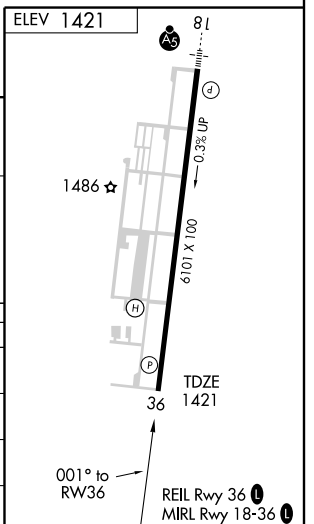
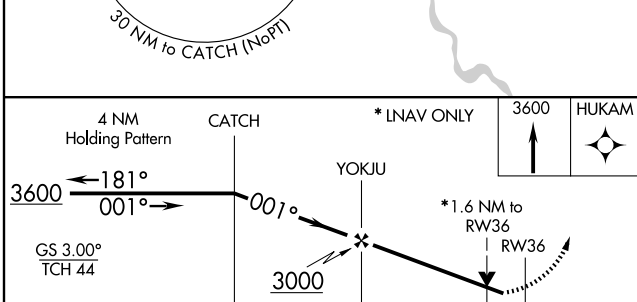
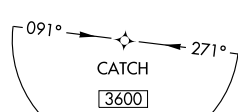
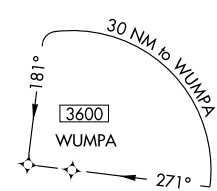
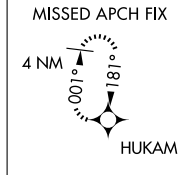
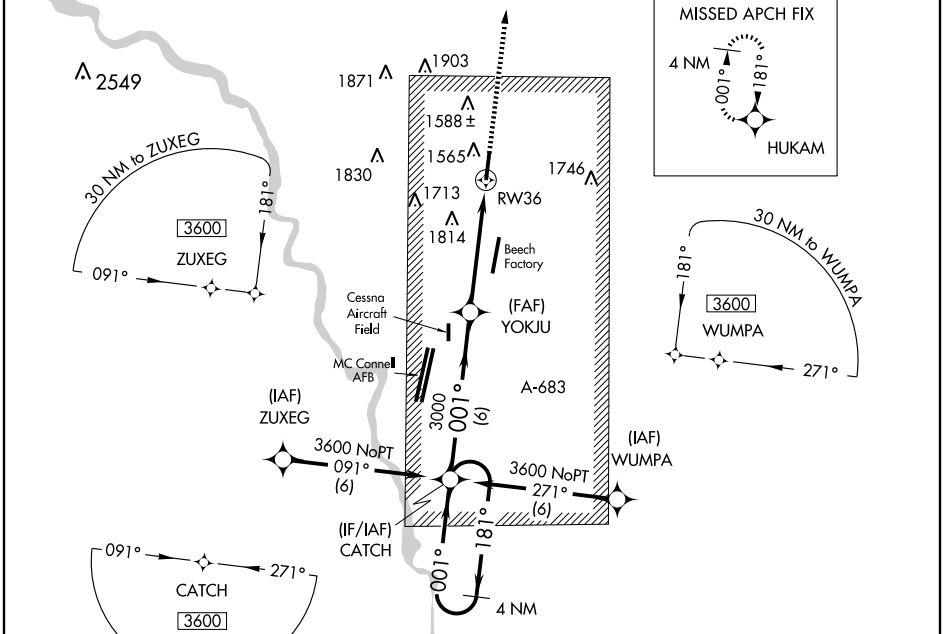
WAAS CH 86208 W36A	APP CRS 001°	Rwy Idg TDZE 1421 Apt Elev 1421	6101
--	------------------------	---	-------------

RNAV (GPS) RWY 36

WICHITA/COLONEL JAMES JABARA (A.A.O)

▼ DME/DME RNP-0.3 NA. If local altimeter setting not received, use Wichita Mid-Continent altimeter setting and increase all DAs/MDAs 40 feet. VDP NA
▲ MISSED APPROACH: Climb to 3600 direct HUKAM and hold.

ASOS 134.025	WICHITA APP CON 134.8 269.1	CLNC DEL 125.0	UNICOM 122.7 (CTAF) ①
------------------------	---------------------------------------	--------------------------	---------------------------------



CATEGORY	A	B	C	D
LPV DA	1740-1 319 (400-1)			
LNAV/VNAV DA	NA			
LNAV MDA	1960-1	539 (600-1)	1960-1½ 539 (600-1½)	1960-1¾ 539 (600-1¾)
CIRCLING	1960-1	539 (600-1)	1960-1½ 539 (600-1½)	2120-2¼ 699 (700-2¼)

WICHITA, KANSAS
Orig-A 09183

37° 45' N-97° 13' W

WICHITA/COLONEL JAMES JABARA (A.A.O)

RNAV (GPS) RWY 36

NC-2, 22 OCT 2009 to 19 NOV 2009

NC-2, 22 OCT 2009 to 19 NOV 2009