

WICHITA, KANSAS

AL-6234 (FAA)

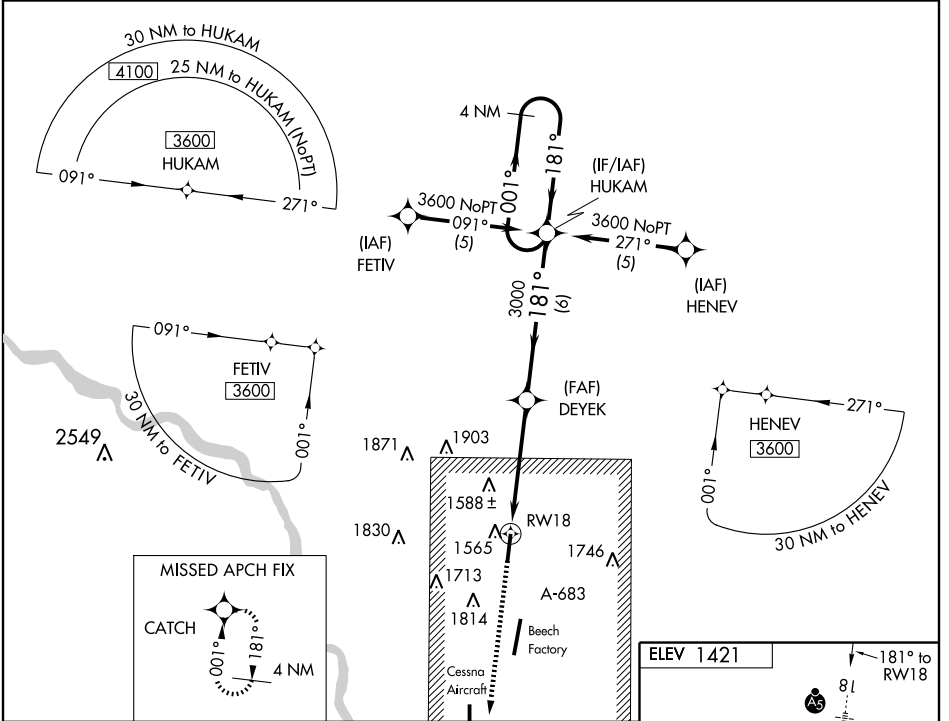
WAAS CH <b>81808</b> <b>W18A</b>	APP CRS <b>181°</b>	Rwy Idg <b>6101</b> TDZE <b>1414</b> Apt Elev <b>1421</b>
--	------------------------	---

# RNAV (GPS) RWY 18

WICHITA/COLONEL JAMES JABARA (A.A.O)

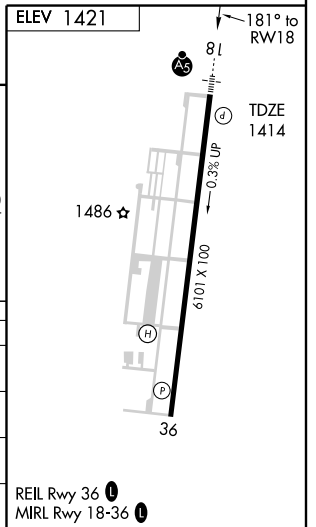
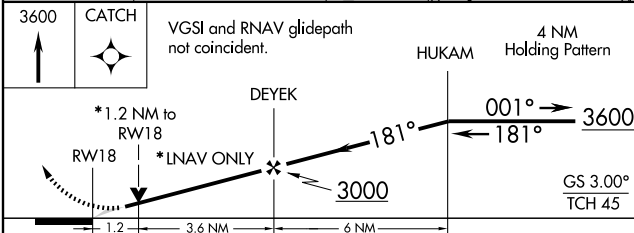
<p><b>▼</b> DME/DME RNP-0.3 NA. For inoperative MALSR, increase LNAV Cat D visibility to 1½. If local altimeter setting not received, use Wichita Mid-Continent altimeter setting and increase all DAs/MDAs 40 feet.</p> <p><b>▲</b></p>	<p>MALSR</p>	<p>MISSED APPROACH: Climb to 3600 direct CATCH and hold.</p>
--	--------------	--

ASOS <b>134.025</b>	WICHITA APP CON <b>134.8 269.1</b>	CLNC DEL <b>125.0</b>	UNICOM <b>122.7 (CTAF)</b> <b>①</b>
------------------------	---------------------------------------	--------------------------	--



NC-2, 22 OCT 2009 to 19 NOV 2009

NC-2, 22 OCT 2009 to 19 NOV 2009



CATEGORY	A	B	C	D
LPV DA	1680-½		266 (300-½)	
LNAV/VNAV DA	NA			
LNAV MDA	1820-½	406 (400-½)	1820-¾ 406 (400-¾)	1820-1 406 (400-1)
CIRCLING	1880-1 459 (500-1)	1880-1 459 (500-1)	1880-1½ 459 (500-1½)	2120-2¼ 699 (700-2¼)

WICHITA, KANSAS  
Orig-B 09183

37° 45' N-97° 13' W

# WICHITA/COLONEL JAMES JABARA (A.A.O)

## RNAV (GPS) RWY 18