

# RNAV (GPS) RWY 34

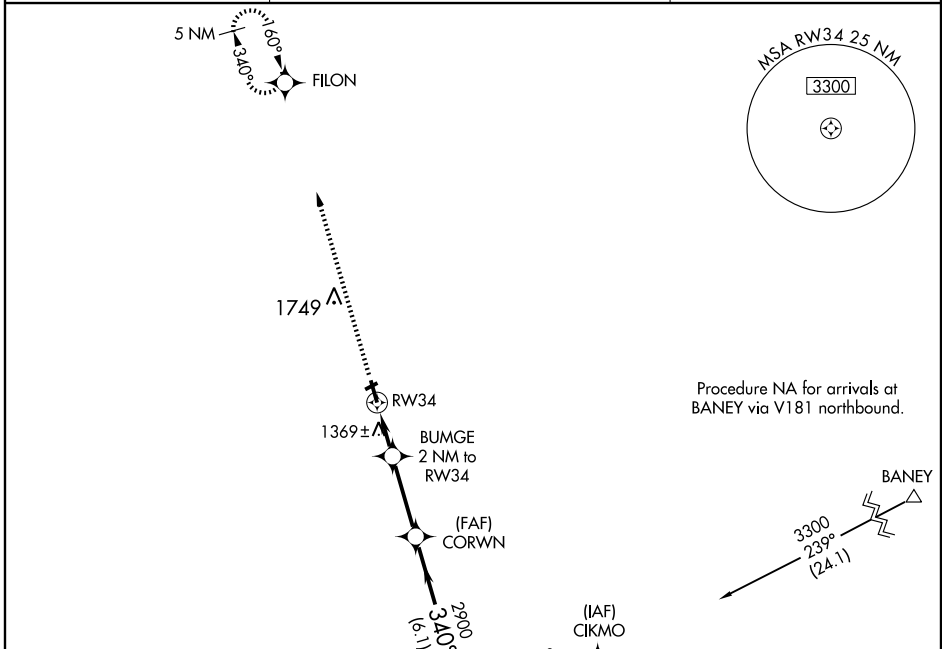
GWINNER-ROGER MELROE FIELD (GWR)

APP CRS	Rwy Idg	<b>4986</b>
<b>340°</b>	TDZE	<b>1256</b>
	Apt Elev	<b>1266</b>

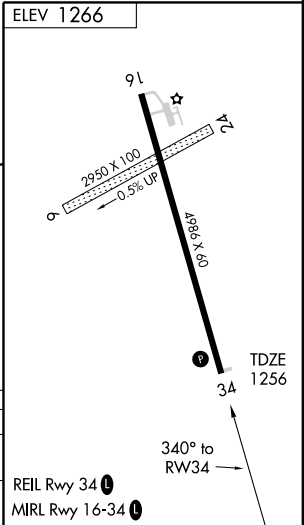
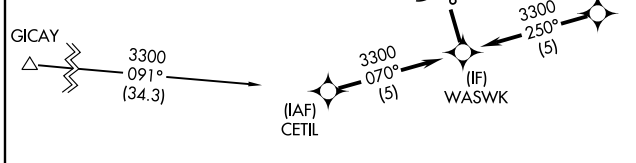
**NA** DME/DME RNP-0.3 NA. When local altimeter setting not received, use Fargo altimeter setting and increase all MDA 180 feet. Increase LNAV Cat C/D visibility ½ mile, Circling Cat C/D ¼ mile. VDP NA when using Fargo altimeter setting.

**MISSED APPROACH:** Climb to 5000 direct FILON and hold, continue climb-in-hold to 5000.

AWOS-3 <b>118.325</b>	MINNEAPOLIS CENTER <b>127.35 278.3</b>	UNICOM <b>122.7 (CTAF) 0</b>
--------------------------	---	---------------------------------



Procedure NA for arrivals at BANEY via V181 northbound.



5000	FILON	VGSI and descent angles not coincident.			WASWK
↑	✦	BUMGE 2 NM to RW34	CORWN	3300	Procedure Turn NA
		1.1 NM to RW34	≤ 3.04° TCH 40	340°	
		1920	2900		
		1.1   0.9   3 NM	6.1 NM		
CATEGORY	A	B	C	D	
LNAV MDA	1620-1	364 (400-1)	1620-1¼ 364 (400-1¼)		
CIRCLING	1700-1 434 (500-1)	1720-1 454 (500-1)	1720-1½ 454 (500-1½)	1820-2 554 (600-2)	

NC-1, 22 OCT 2009 to 19 NOV 2009

NC-1, 22 OCT 2009 to 19 NOV 2009