

RNAV (GPS) RWY 16

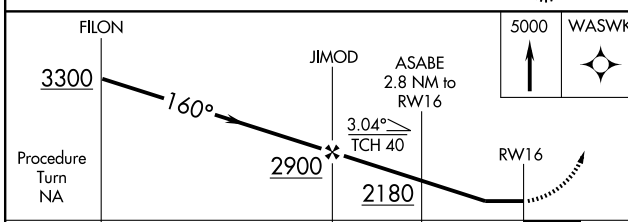
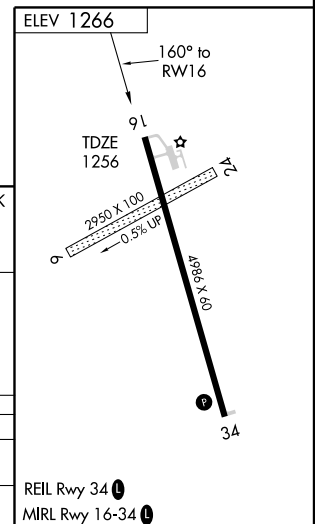
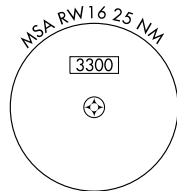
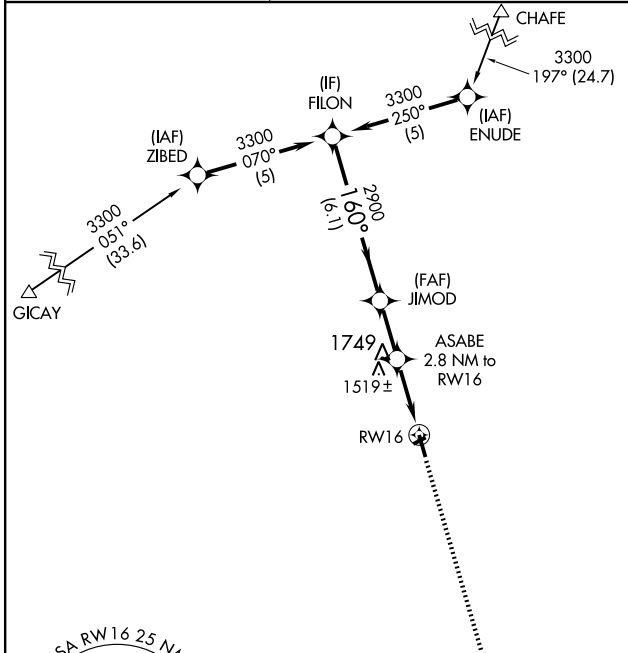
GWINNER-ROGER MELROE FIELD (GWR)

APP CRS	Rwy Idg	4986
160°	TDZE	1256
	Apt Elev	1266

▼ DME/DME RNP-0.3 NA. Visibility reduction by helicopters NA. When local altimeter setting not received, use Fargo altimeter setting and increase all MDA 180 feet.
▲ NA Increase LNAV Cat C/D visibility ½ mile, Circling Cat C ½ mile and Cat D ¼ mile.

MISSED APPROACH: Climb to 5000 direct WASWK and hold, continue climb-in-hold to 5000.

AWOS-3 118.325	MINNEAPOLIS CENTER 127.35 278.3	UNICOM 122.7 (CTAF) 0
--------------------------	-------------------------------------------	---------------------------------



CATEGORY	A	B	C	D
LNAV MDA	1780-1	524 (600-1)	1780-1½ 524 (600-1½)	1780-1¾ 524 (600-1¾)
CIRCLING	1780-1	514 (600-1)	1780-1½ 514 (600-1½)	1820-2 554 (600-2)

NC-1, 22 OCT 2009 to 19 NOV 2009

NC-1, 22 OCT 2009 to 19 NOV 2009