

NDB RWY 34

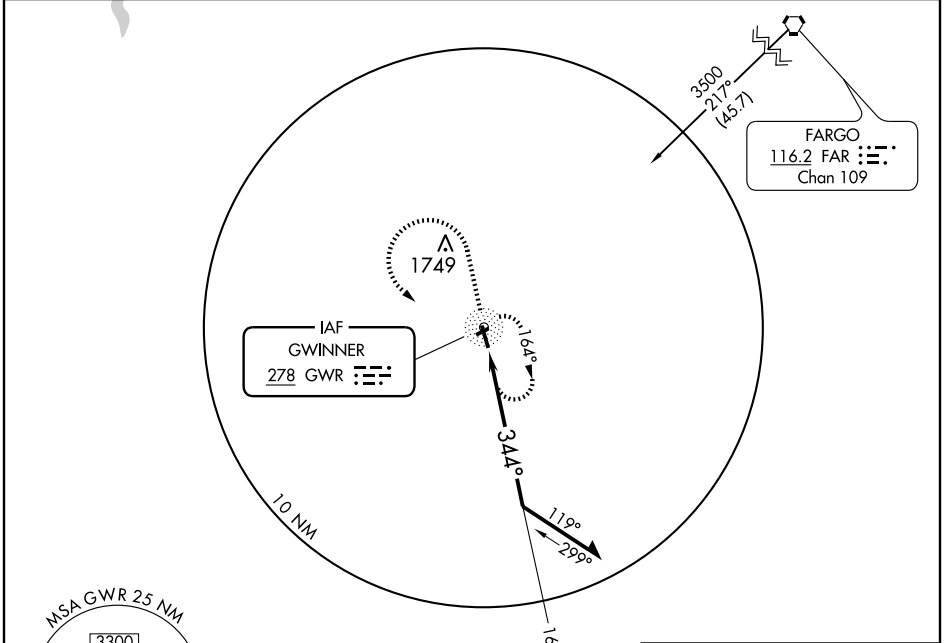
GWINNER-ROGER MELROE FIELD (GWR)

NDB GWR 278	APP CRS 344°	Rwy Idg TDZE Apt Elev	4986 1256 1266
-----------------------	------------------------	-----------------------------	---

▽ When local altimeter setting not received, use Fargo altimeter setting and increase all MDA 180 feet. Increase all Cat B visibilities ¼ mile, and all Cat C/D visibilities ¾ mile.
△ NA

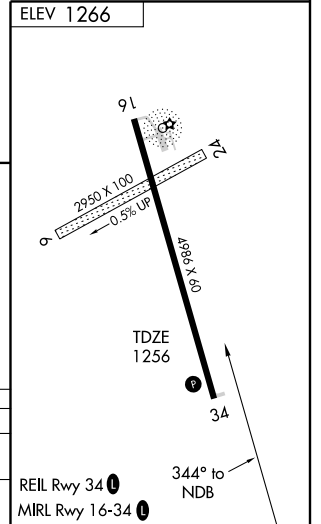
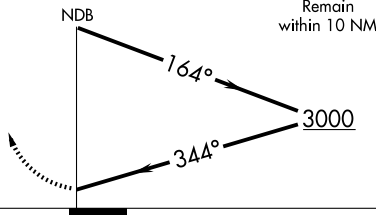
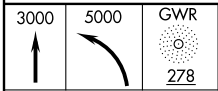
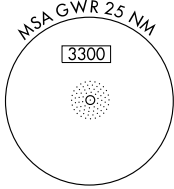
MISSED APPROACH: Climb to 3000 then climbing left turn to 5000 direct GWR NDB and hold, continue climb-in-hold to 5000.

AWOS-3 118.325	MINNEAPOLIS CENTER 127.35 278.3	UNICOM 122.7 (CTAF) 0
--------------------------	---	--



NC-1, 22 OCT 2009 to 19 NOV 2009

NC-1, 22 OCT 2009 to 19 NOV 2009



CATEGORY	A	B	C	D
S-34	1840-1	584 (600-1)	1840-1½ 584 (600-1½)	1840-1¾ 584 (600-1¾)
CIRCLING	1840-1	574 (600-1)	1840-1½ 574 (600-1½)	1840-2 574 (600-2)