

LINDEN, MICHIGAN

AL-6232 (FAA)

RNAV (GPS) RWY 27

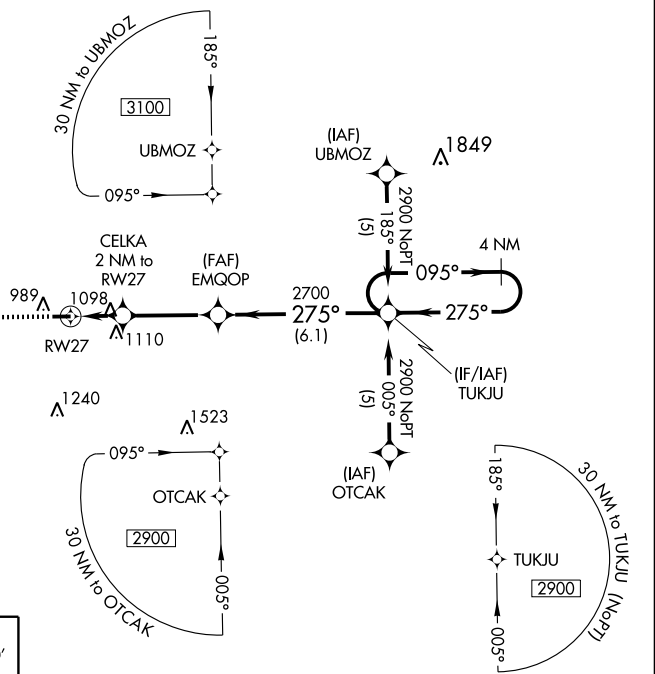
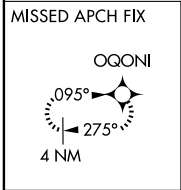
LINDEN/ PRICE'S (9G2)

APP CRS	Rwy ldg	3200
275°	TDZE	915
	Apt Elev	920

▽ Use Flint altimeter setting; when not received, use Howell altimeter setting. DME/DME RNP-0.3 NA.

▲ NA MISSED APPROACH: Climb to 3100 direct OQONI and hold.

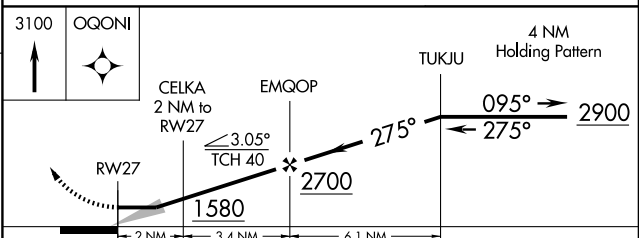
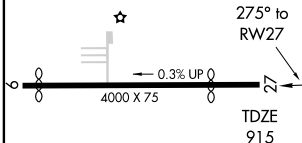
FLINT ASOS 133.15	FLINT APP CON ★ 118.8 257.9	UNICOM 123.0 (CTAF) 0
-----------------------------	---------------------------------------	---------------------------------



EC-1, 22 OCT 2009 to 19 NOV 2009

EC-1, 22 OCT 2009 to 19 NOV 2009

ELEV 920	Rwy 9 ldg 3732'
	Rwy 27 ldg 3200'



REIL Rwy 9 **0**
MIRL Rwy 9-27 **0**

CATEGORY	A	B	C	D
LNAV MDA	1400-1	485 (500-1)		NA
CIRCLING	1460-1	540 (600-1)		NA

LINDEN, MICHIGAN
Amdt 1 08185

42°48'N - 83°46'W

RNAV (GPS) RWY 27

LINDEN/ PRICE'S (9G2)