

# RNAV (GPS) RWY 22

MALVERN MUNI (M78)

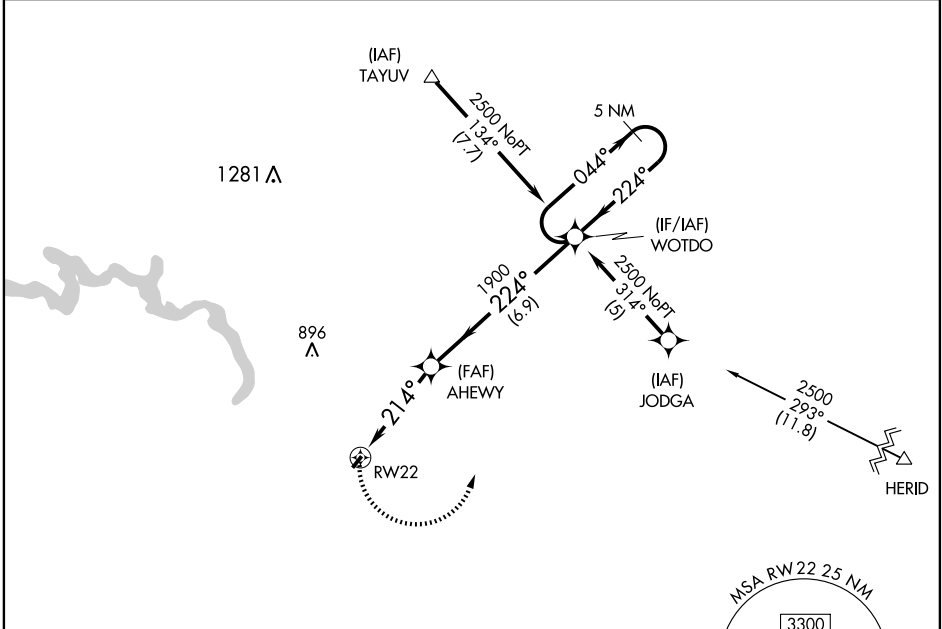
APP CRS <b>214°</b>	Rwy Idg <b>2812</b>
	TDZE <b>538</b>
	Apt Elev <b>538</b>

**▼** Use Hot Springs altimeter setting; if not received, use Adams Field altimeter setting and increase all MDAs 80 feet. DME/DME RNP-0.3 NA.  
**▲** NA

**MISSED APPROACH:** Climbing left turn to 2500 direct WOTDO and hold.

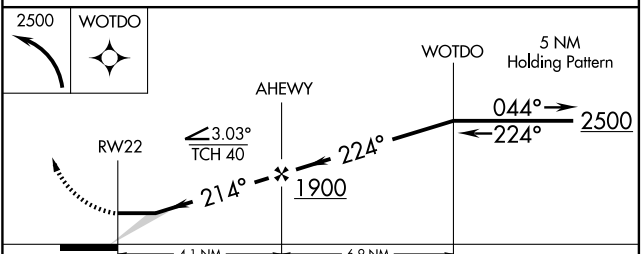
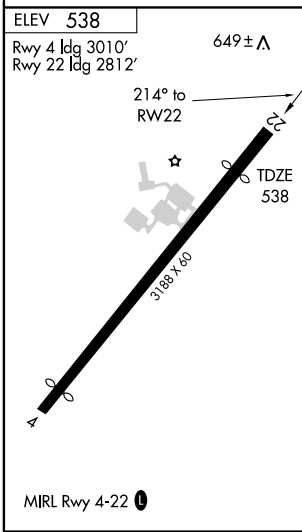
MEMPHIS CENTER  
**128.475 377.15**

UNICOM  
**122.8 (CTAF) 0**



SC-1, 22 OCT 2009 to 19 NOV 2009

SC-1, 22 OCT 2009 to 19 NOV 2009



CATEGORY	A	B	C	D
LNAV MDA	960-1	422 (500-1)	NA	
CIRCLING	1000-1	462 (500-1)	NA	