

LURAY, VIRGINIA

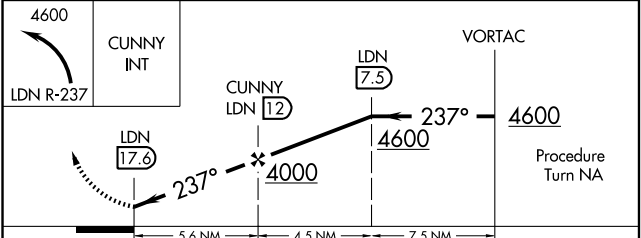
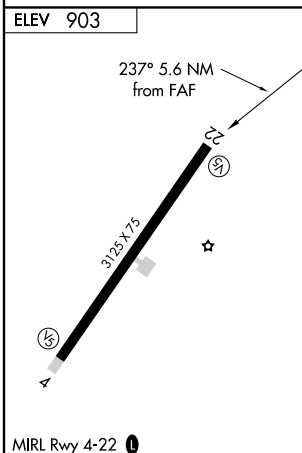
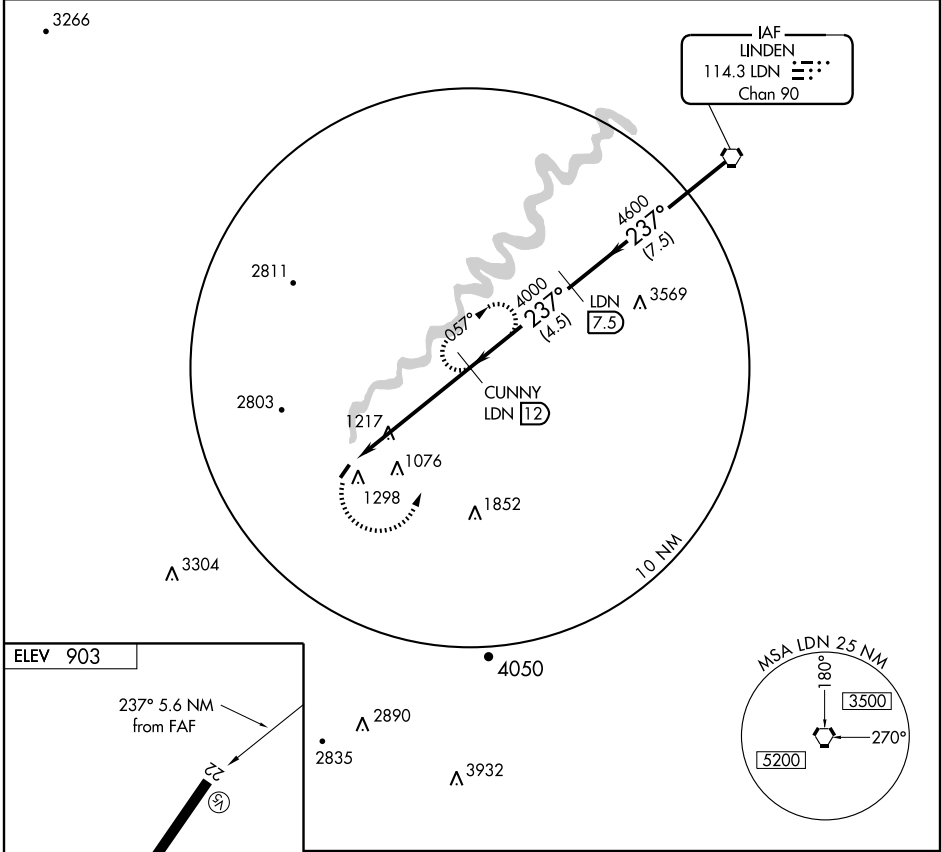
AL-6229 (FAA)

VORTAC LDN 114.3 Chan 90	APP CRS 237°	Rwy Idg TDZE Apt Elev 903	N/A N/A 903
--	------------------------	---	-------------------

VOR/DME-B
LURAY CAVERNS (W45)

<p>▼ ▲ NA</p> <p>Use Charlottesville altimeter setting.</p>	<p>MISSED APPROACH: Climbing left turn to 4600 via LDN R-237 to CUNNY and hold.</p>
---	---

<p>WASHINGTON CENTER 133.2 282.2</p>	<p>UNICOM 122.8 (CTAF) 0</p>
---	---



ELEV 903	237° 5.6 NM from FAF		3125x75		MIRL Rwy 4-22 0
CATEGORY	A	B	C	D	
CIRCLING	2320-1¼ 1417 (1500-1¼)	2320-1½ 1417 (1500-1½)	2320-3 1417 (1500-3)	NA	

LURAY, VIRGINIA
Amdt 2 02220

38°40'N - 78°30'W

LURAY CAVERNS (W45)
VOR/DME-B

NE-3, 22 OCT 2009 to 19 NOV 2009

NE-3, 22 OCT 2009 to 19 NOV 2009