

LURAY, VIRGINIA

AL-6229 (FAA)

RNAV (GPS) RWY 22

LURAY CAVERNS (W45)

APP CRS 230°	Rwy Idg 3125
	TDZE 903
	Apt Elev 903

▼ Use Charlottesville altimeter setting; when not received, use Orange altimeter setting and increase all MDAs 20 feet.
▲ NA DME/DME RNP-0.3 NA. Visibility reduction by helicopters NA.

MISSED APPROACH: Climb to 6000 direct FIBIR and via 213° track to SAHDO and hold, continue climb-and-hold to 6000.

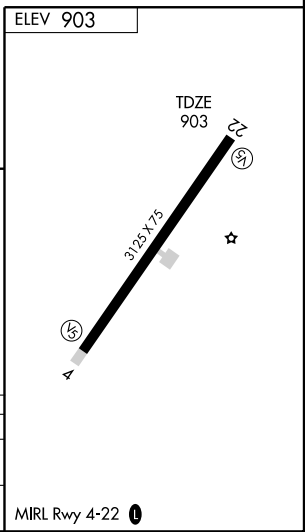
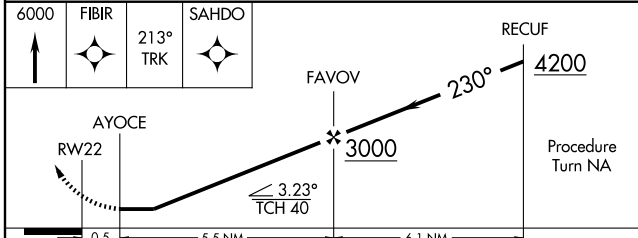
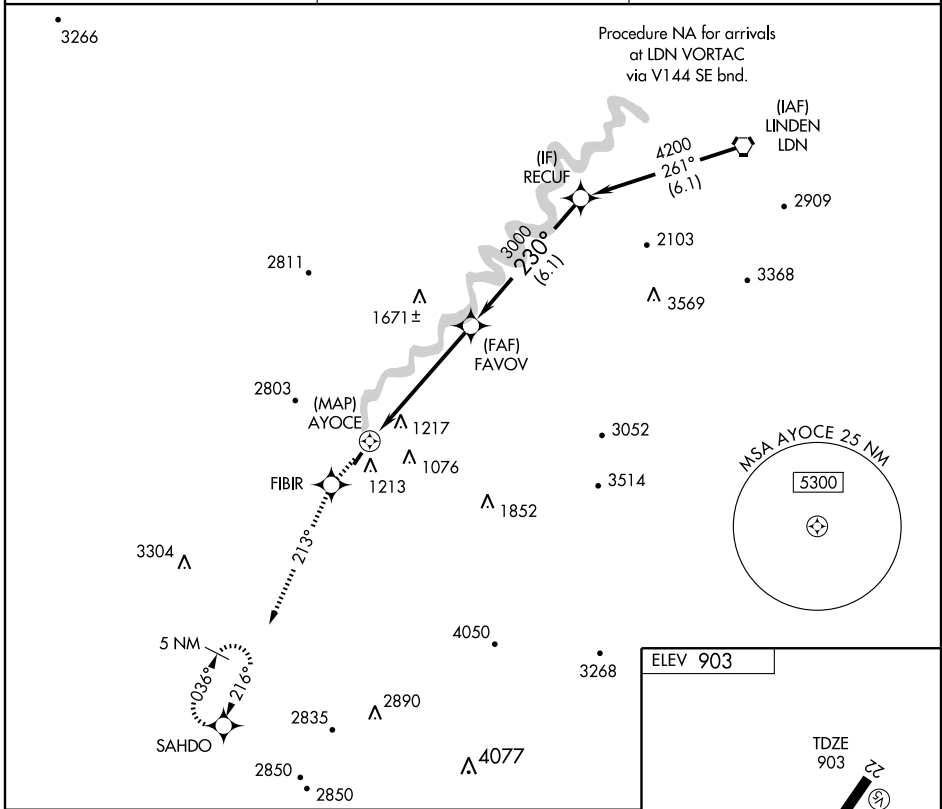
CHARLOTTESVILLE ASOS
118.425

WASHINGTON CENTER
133.2 282.2

UNICOM
122.8 (CTAF) 0

NE-3, 22 OCT 2009 to 19 NOV 2009

NE-3, 22 OCT 2009 to 19 NOV 2009



CATEGORY	A	B	C	D
RNAV MDA	2280-1¼ 1377 (1400-1¼)	2280-1½ 1377 (1400-1½)	2280-3 1377 (1400-3)	NA
CIRCLING	2320-1¼ 1417 (1500-1¼)	2320-1½ 1417 (1500-1½)	2320-3 1417 (1500-3)	NA

LURAY, VIRGINIA
Orig 08045

38°40'N - 78°30'W

RNAV (GPS) RWY 22