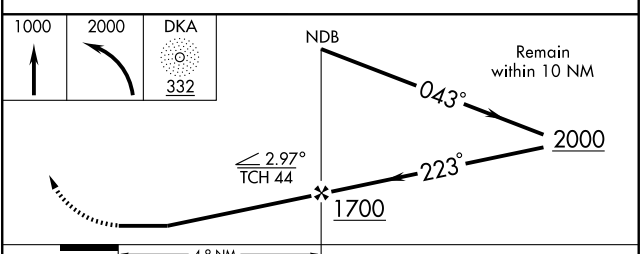
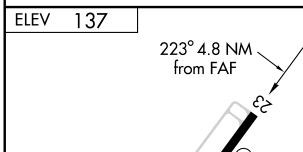
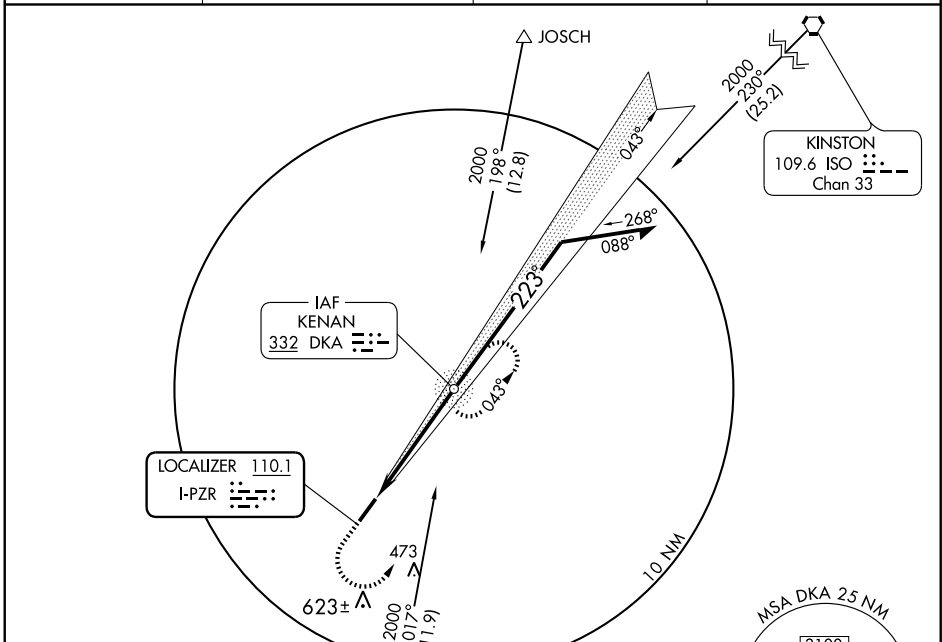


# LOC RWY 23

KENANSVILLE/DUPLIN COUNTY (DPL)

LOC I-PZR <b>110.1</b>	APP CRS <b>223°</b>	Rwy Idg <b>6002</b>
		TDZE <b>137</b>
		Apt Elev <b>137</b>

ADF REQUIRED		MISSED APPROACH: Climb to 1000 then climbing left turn to 2000 direct DKA NDB and hold.	
AWOS-3 <b>120.675</b>	SEYMOUR JOHNSON APP CON* <b>119.7 273.6</b>	GCO <b>135.075</b>	UNICOM <b>123.0 (CTAF)</b>



REIL Rwys 5 and 23	MIRL Rwy 5-23				
FAF to MAP 4.8 NM					
Knots	60	90	120	150	180
Min:Sec	4:48	3:12	2:24	1:55	1:36
CATEGORY	A	B	C	D	
S-23	560-1	423 (500-1)	560-1¼	423 (500-1¼)	
CIRCLING	560-1 423 (500-1)	600-1 463 (500-1)	600-1½ 463 (500-1½)	760-2 623 (700-2)	

SE-2, 22 OCT 2009 to 19 NOV 2009

SE-2, 22 OCT 2009 to 19 NOV 2009