

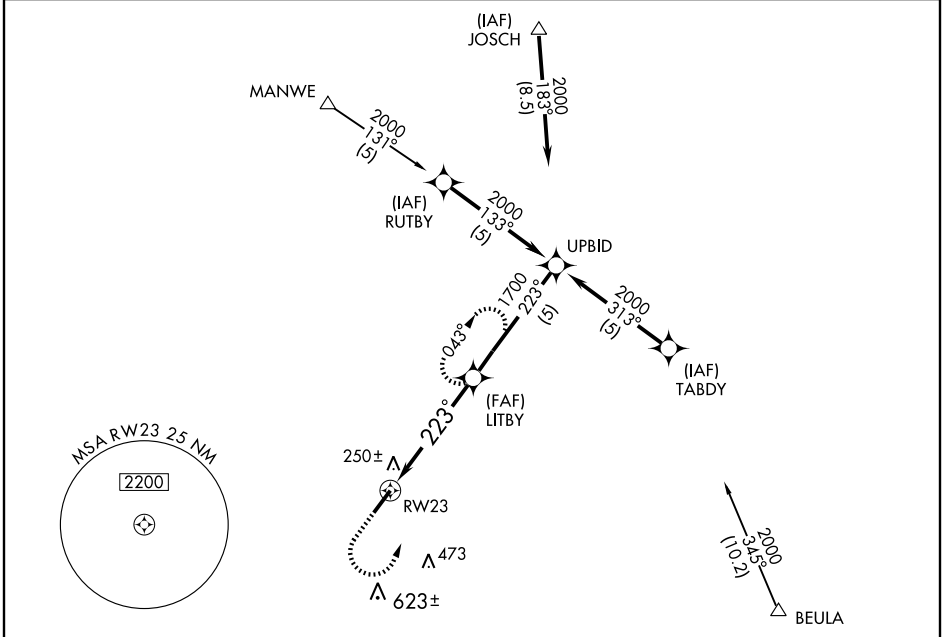
GPS RWY 23

KENANSVILLE/ DUPLIN COUNTY (DPL)

APP CRS 223°	Rwy Idg 6002
	TDZE 137
	Apt Elev 137

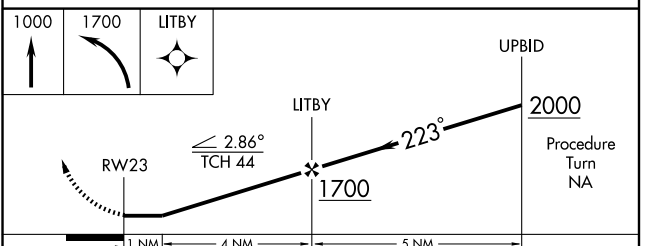
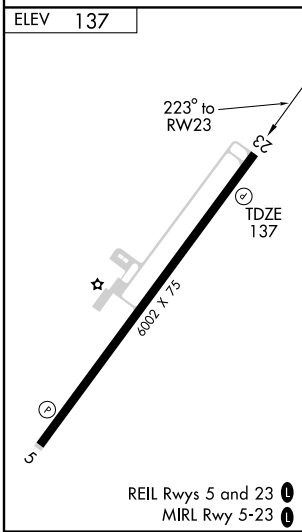
	MISSED APPROACH: Climb to 1000 then climbing left turn to 1700 direct LITBY WP and hold.
--	--

AWOS-3 120.675	SEYMOUR JOHNSON APP CON* 119.7 273.6	GCO 135.075	UNICOM 123.0 (CTAF)
--------------------------	--	-----------------------	-------------------------------



SE-2, 22 OCT 2009 to 19 NOV 2009

SE-2, 22 OCT 2009 to 19 NOV 2009



CATEGORY	A	B	C	D
S-23	500-1 363 (400-1)			500-1¼ 363 (400-1¼)
CIRCLING	560-1 423 (500-1)	600-1 463 (500-1)	600-1½ 463 (500-1½)	760-2 623 (700-2)