

ULYSSES, KANSAS

AL-6226 (FAA)

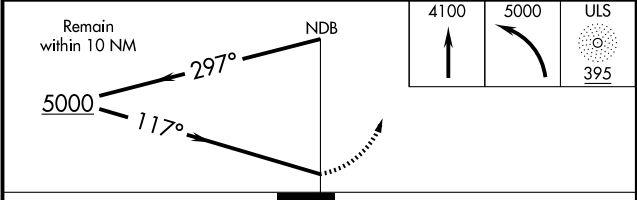
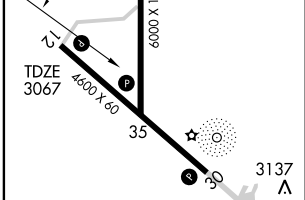
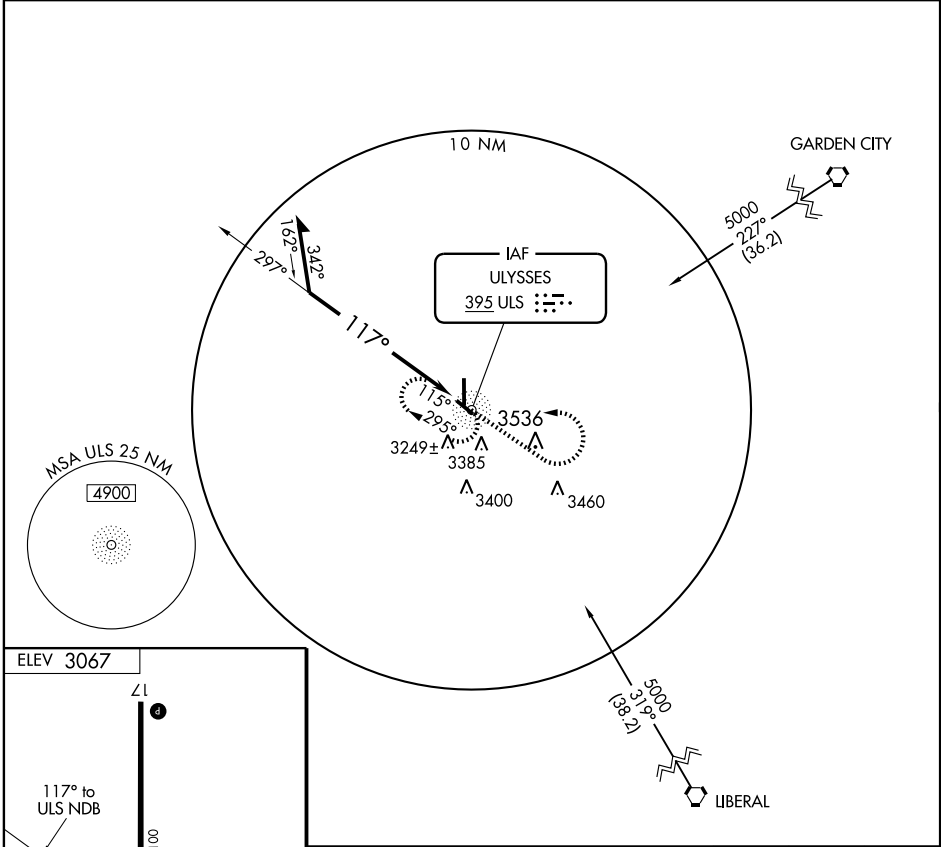
NDB RWY 12

ULYSSES (ULS)

NDB ULS 395	APP CRS 117°	Rwy Idg 4600
		TDZE 3067
		Apt Elev 3067

MISSED APPROACH: Climb to 4100, then climbing left turn to 5000 direct ULS NDB and hold.

AWOS-3 118.95	GARDEN CITY RADIO 122.3	UNICOM 122.8 (CTAF)
-------------------------	-----------------------------------	-------------------------------



CATEGORY	A	B	C	D
S-12	3580-1	513 (600-1)	3580-1½ 513 (600-1½)	NA
CIRCLING	3740-1	673 (700-1)	3740-2 673 (700-2)	NA

ULYSSES, KANSAS
Amdt 3 09267

37°36' N-101°22' W

ULYSSES (ULS)

NDB RWY 12

NC-2, 22 OCT 2009 to 19 NOV 2009

NC-2, 22 OCT 2009 to 19 NOV 2009