

MURRAY, KENTUCKY

AL-6225 (FAA)

GPS RWY 23

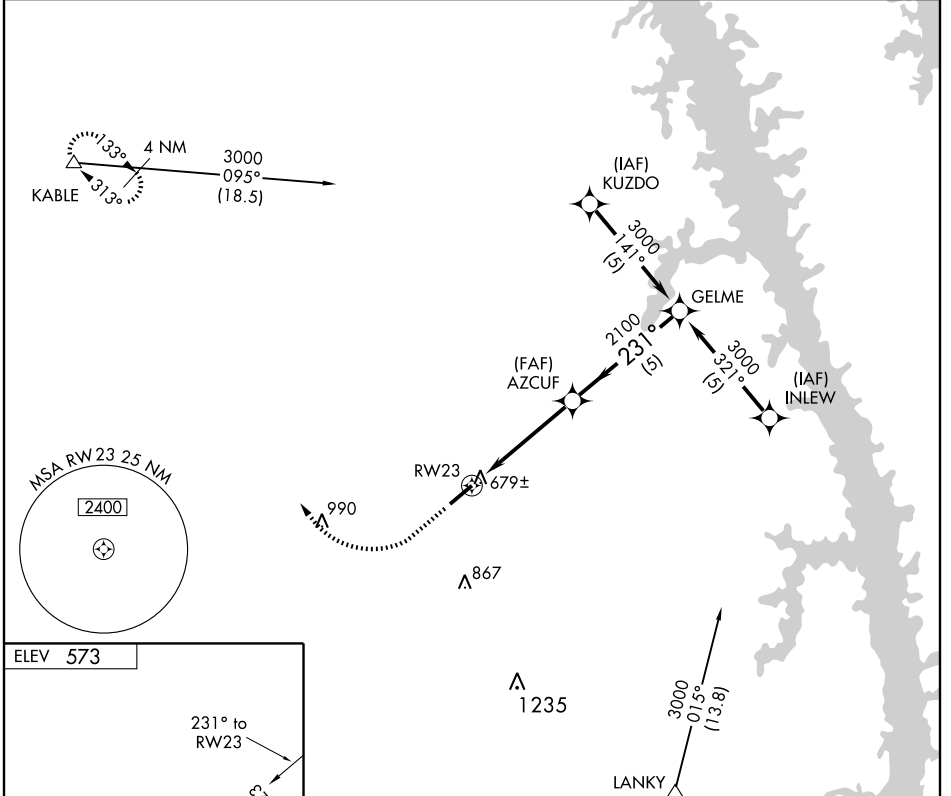
MURRAY/ KYLE-OAKLEY FIELD (CEY)

APP CRS	Rwy Idg	6203
231°	TDZE	567
	Apt Elev	573

▽
△ NA

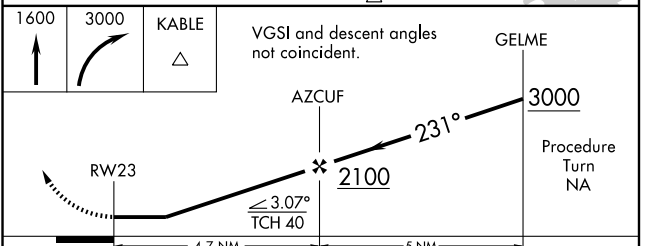
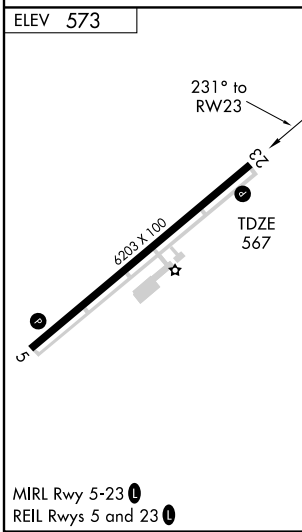
MISSED APPROACH: Climb to 1600 then climbing right turn to 3000 direct KABLE WP and hold.

AWOS-3 119.975	MEMPHIS CENTER 133.65 292.15	UNICOM 122.7 (CTAF) 0
--------------------------	----------------------------------------	---------------------------------



SE-1, 22 OCT 2009 to 19 NOV 2009

SE-1, 22 OCT 2009 to 19 NOV 2009



CATEGORY	A	B	C	D
S-23	940-1 373 (400-1)			940-1¼ 373 (400-1¼)
CIRCLING	1000-1 427 (500-1)	1040-1 467 (500-1)	1040-1½ 467 (500-1½)	1140-2 567 (600-2)

MURRAY, KENTUCKY
Amdt 1 09183

36° 40-N-88° 22'W

MURRAY/ KYLE-OAKLEY FIELD (CEY)
GPS RWY 23