

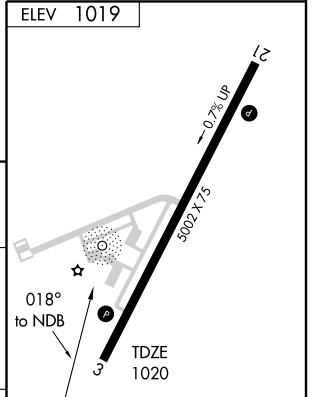
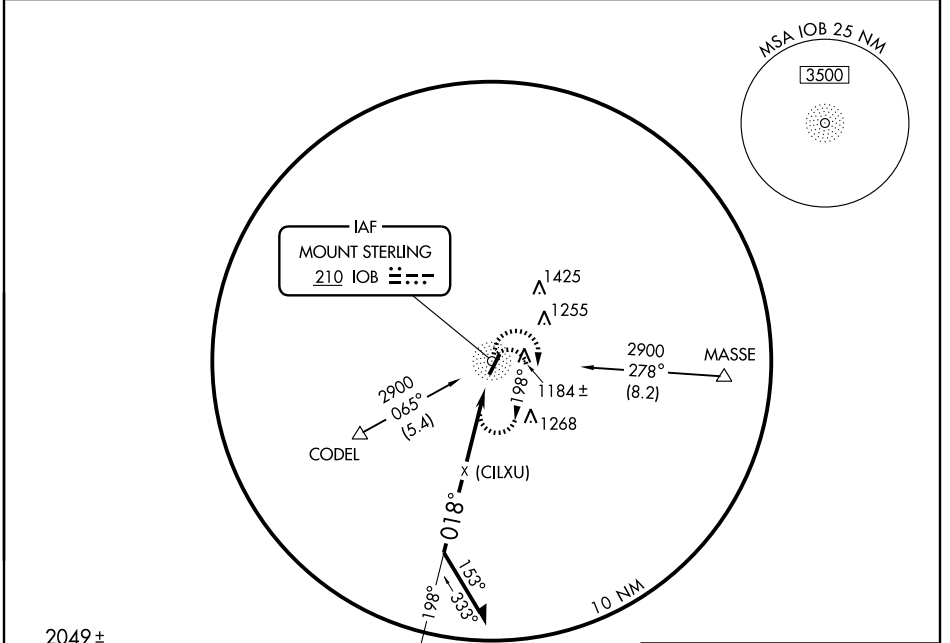
NDB or GPS RWY 3

MOUNT STERLING-MONTGOMERY COUNTY (IOB)

NDB IOB 210	APP CRS 018°	Rwy Idg 5002
		TDZE 1020
		Apt Elev 1019

	MISSED APPROACH: Climbing right turn to 2900 in IOB NDB holding pattern.
--	--

AWOS-3 120.675	LEXINGTON APP CON 120.15 259.3	UNICOM 122.8 (CTAF)
--------------------------	--	-------------------------------



CATEGORY	A	B	C	D
	1660-1	640 (700-1)	1660-1 ³ / ₄ 640 (700-1 ³ / ₄)	1660-2 640 (700-2)
S-3	1660-1	640 (700-1)	1660-1 ³ / ₄ 640 (700-1 ³ / ₄)	1660-2 640 (700-2)
CIRCLING	1660-1	640 (700-1)	1660-1 ³ / ₄ 640 (700-1 ³ / ₄)	1660-2 640 (700-2)

MIRL Rwy 3-21	1				
REIL Rws 3 and 21	1				
Knots	60	90	120	150	180
Min:Sec					

NDB or GPS RWY 3

SE-1, 22 OCT 2009 to 19 NOV 2009

SE-1, 22 OCT 2009 to 19 NOV 2009