

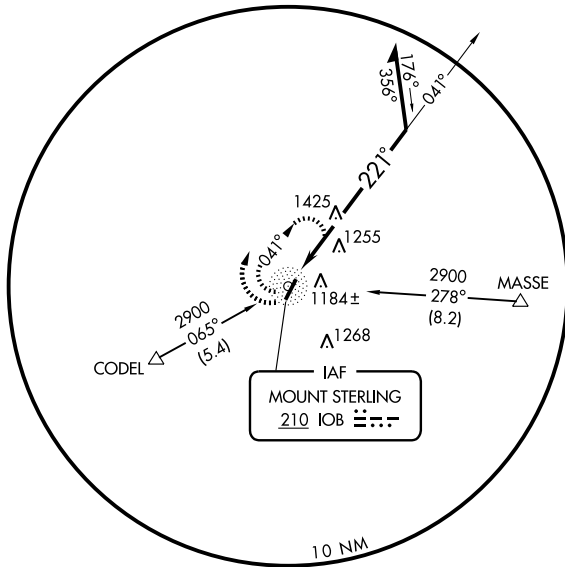
NDB RWY 21

MOUNT STERLING-MONTGOMERY COUNTY (IOB)

NDB IOB 210	APP CRS 221°	Rwy Idg 5002
		TDZE 1007
		Apt Elev 1019

	MISSED APPROACH: Climbing right turn to 2900 in IOB NDB holding pattern.
--	--

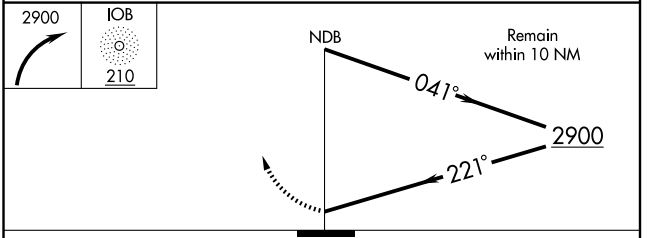
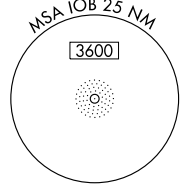
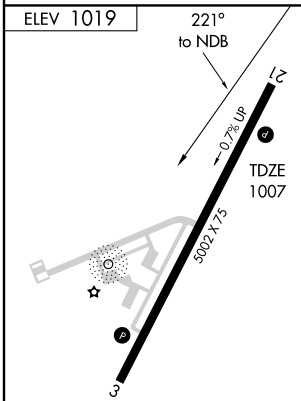
AWOS-3 120.675	LEXINGTON APP CON 120.15 259.3	UNICOM 122.8 (CTAF)
--------------------------	--	-------------------------------



SE-1, 22 OCT 2009 to 19 NOV 2009

SE-1, 22 OCT 2009 to 19 NOV 2009

2049±
△



	MOUNT STERLING 210 IOB			
CATEGORY	A	B	C	D
S-21	1840-1 833 (900-1)	1840-1¼ 833 (900-1¼)	1840-2½ 833 (900-2½)	1840-2¾ 833 (900-2¾)
CIRCLING	1840-1 820 (900-1)	1840-1¼ 820 (900-1¼)	1840-2½ 820 (900-2½)	1840-2¾ 820 (900-2¾)
Knots	60	90	120	150
Min:Sec				

NDB RWY 21