

MAYFIELD, KENTUCKY

AL-6223 (FAA)

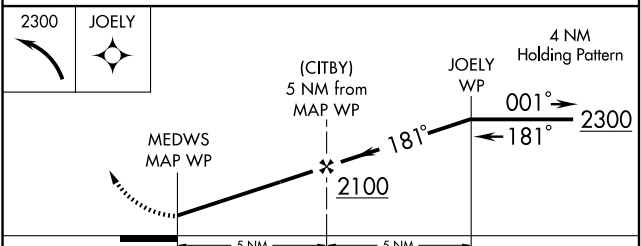
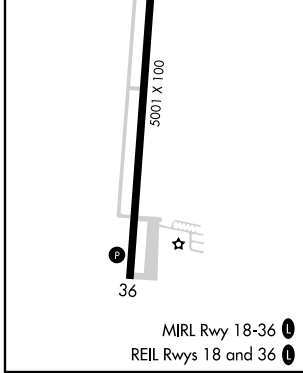
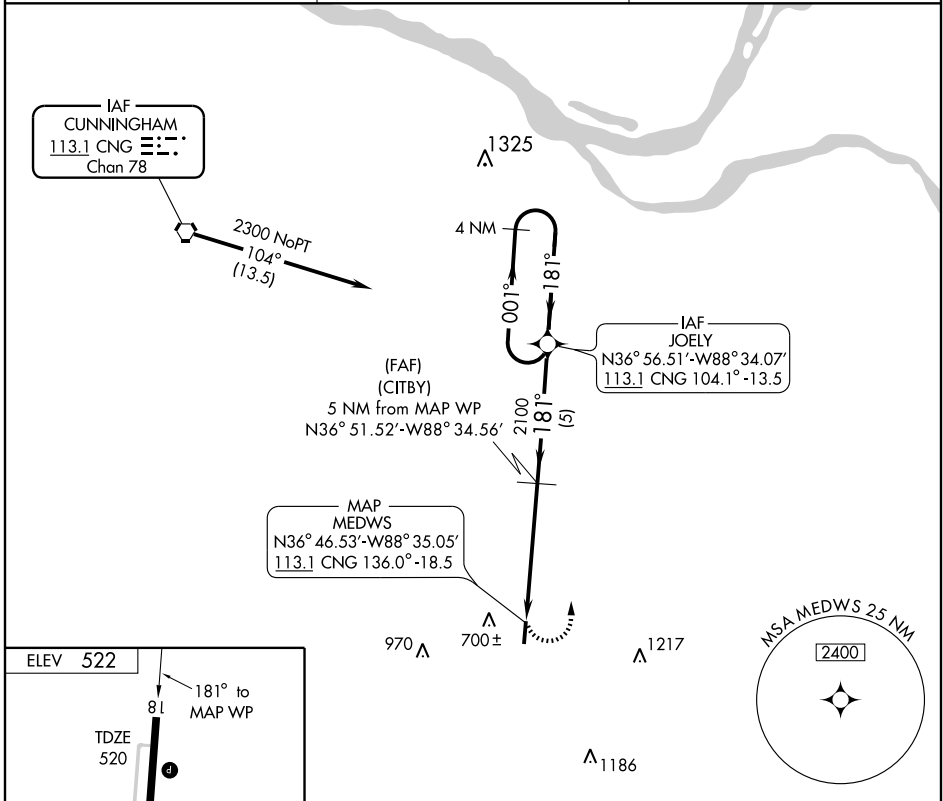
VORTAC CNG 113.1 Chan 78	APP CRS 181°	Rwy Idg TDZE Apt Elev	5001 520 522
--	------------------------	-----------------------------	---

VOR/DME RNAV or GPS RWY 18

MAYFIELD GRAVES COUNTY (M25)

▲ If local altimeter not received, use Paducah altimeter setting and increase all MDAs 60 feet. MISSED APPROACH: Climbing left turn to 2300 direct JOELY WP and hold.

AWOS-3 120.625	MEMPHIS CENTER 133.65 292.15	UNICOM 122.8 (CTAF) 0
--------------------------	--	---------------------------------



CATEGORY	A	B	C	D
S-18	1000-1	480 (500-1)	1000-1½ 480 (500-1½)	1000-1½ 480 (500-1½)
CIRCLING	1060-1	538 (600-1)	1060-1½ 538 (600-1½)	1080-2 558 (600-2)

MAYFIELD, KENTUCKY
Amdt 3 08325

36° 46' N-88° 35' W

MAYFIELD GRAVES COUNTY (M25)

VOR/DME RNAV or GPS RWY 18

SE-1, 22 OCT 2009 to 19 NOV 2009

SE-1, 22 OCT 2009 to 19 NOV 2009