

MAYFIELD, KENTUCKY

AL-6223 (FAA)

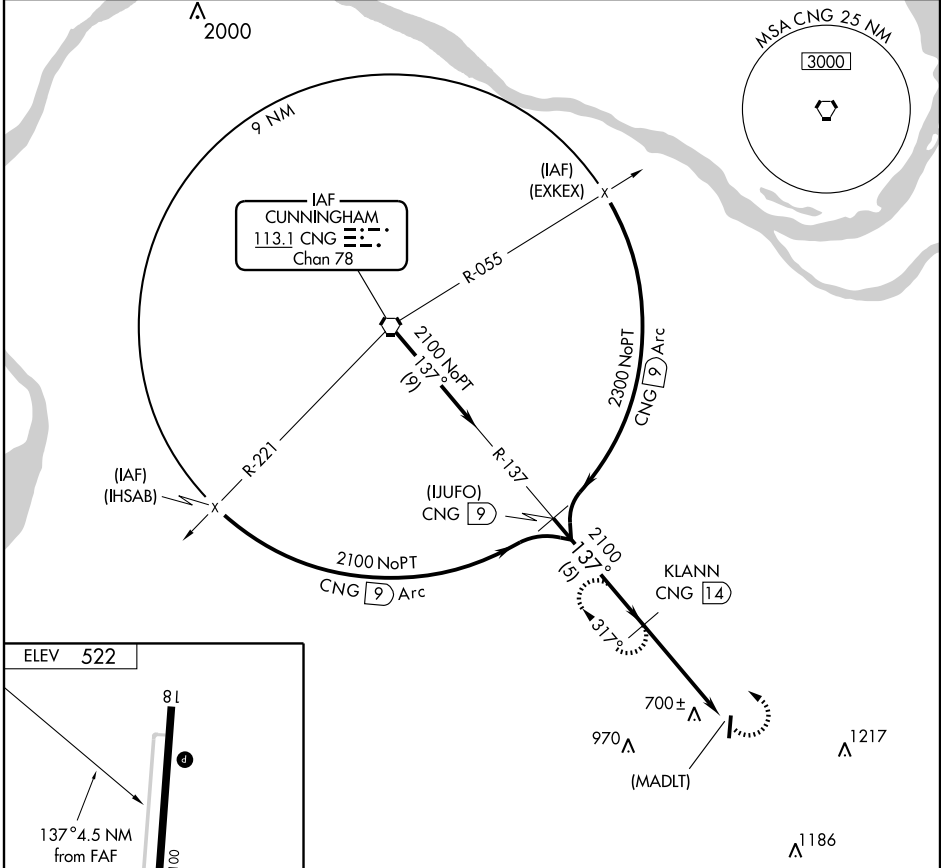
VORTAC CNG 113.1 Chan 78	APP CRS 137°	Rwy Idg TDZE Apt Elev	N/A N/A 522
--	------------------------	-----------------------------	--

VOR/DME or GPS-A
MAYFIELD GRAVES COUNTY (M25)

NA If local altimeter not received, use Paducah altimeter setting and increase all MDAs 60 feet.

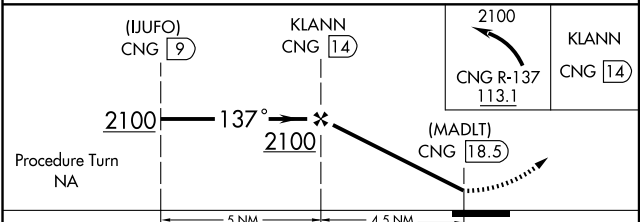
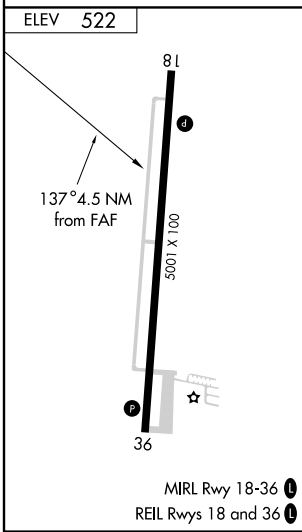
MISSED APPROACH: Climbing left turn to 2100 via CNG R-137 to KLANN 14 DME and hold.

AWOS-3 120.625	MEMPHIS CENTER 133.65 292.15	UNICOM 122.8 (CTAF) 0
--------------------------	--	--



SE-1, 22 OCT 2009 to 19 NOV 2009

SE-1, 22 OCT 2009 to 19 NOV 2009



CATEGORY	A	B	C	D
CIRCLING	1060-1	538 (600-1)	1060-1½ 538 (600-1½)	1080-2 558 (600-2)

MAYFIELD, KENTUCKY
Amdt 7 08325

36° 46'N-88° 35'W

MAYFIELD GRAVES COUNTY (M25)
VOR/DME or GPS-A