

MAYFIELD, KENTUCKY

AL-6223 (FAA)

# GPS RWY 36

MAYFIELD GRAVES COUNTY (M25)

APP CRS	Rwy Idg	<b>5001</b>
<b>004°</b>	TDZE	<b>522</b>
	Apt Elev	<b>522</b>

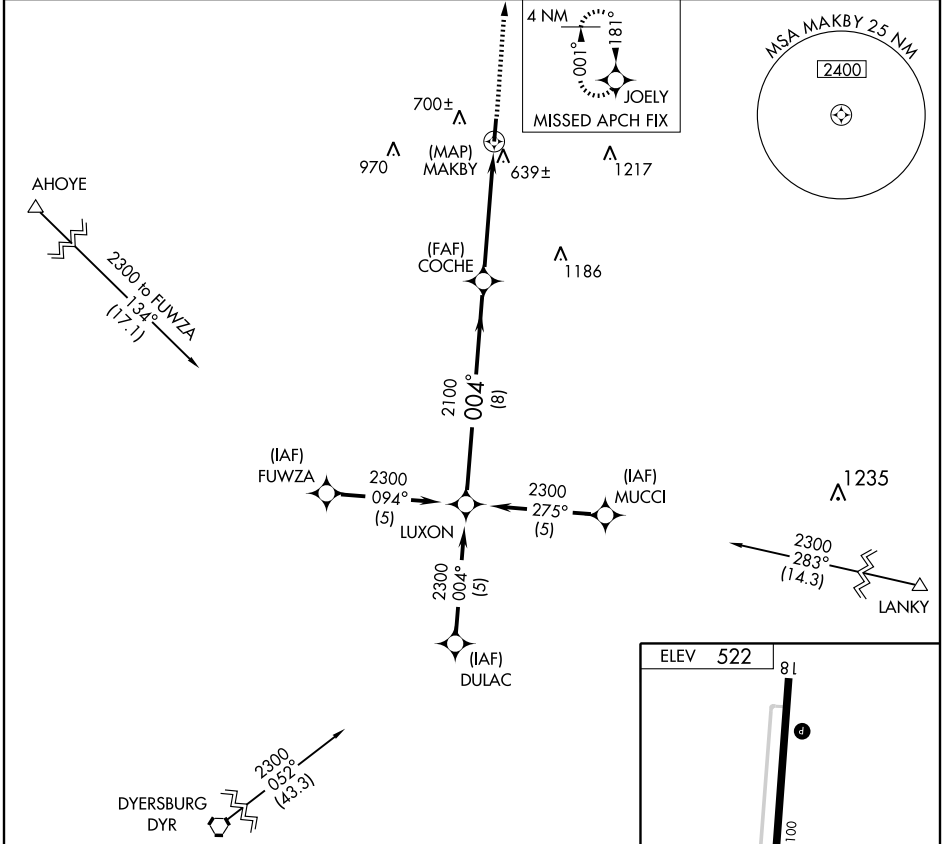
**▽** If local altimeter setting not received, use Paducah altimeter setting and increase all MDAs 60 feet.

**MISSED APPROACH:** Climb to 2300 via 004° course to JOELY WP and hold.

AWOS-3  
**120.625**

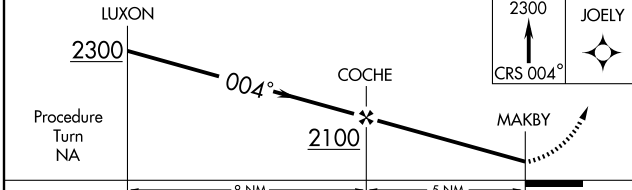
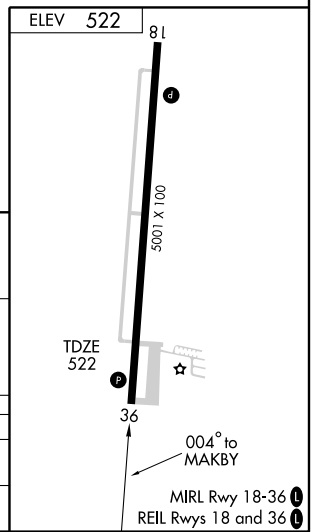
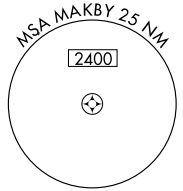
MEMPHIS CENTER  
**133.65 292.15**

UNICOM  
**122.8 (CTAF) 0**



SE-1, 22 OCT 2009 to 19 NOV 2009

SE-1, 22 OCT 2009 to 19 NOV 2009



CATEGORY	A	B	C	D
S-36	900-1 378 (400-1)			900-1½ 378 (400-1½)
CIRCLING	1060-1 538 (600-1)	1060-1½ 538 (600-1½)		1080-2 558 (600-2)

MAYFIELD, KENTUCKY  
Orig 08325

36° 46' N - 88° 35' W

MAYFIELD GRAVES COUNTY (M25)  
**GPS RWY 36**