

# RNAV (GPS) RWY 35

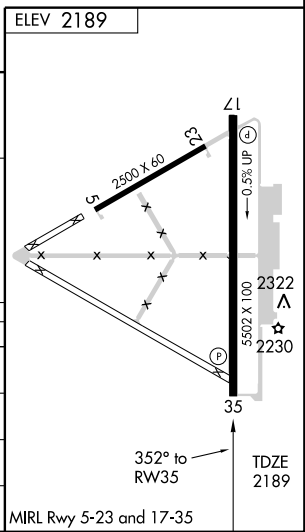
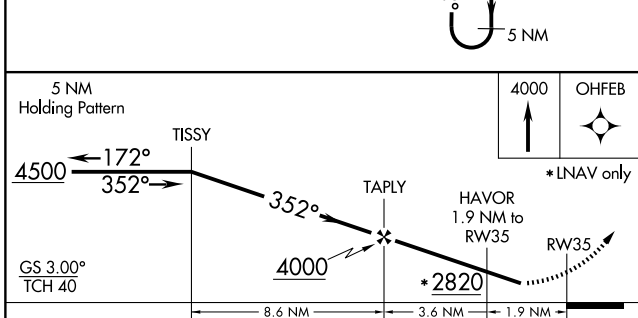
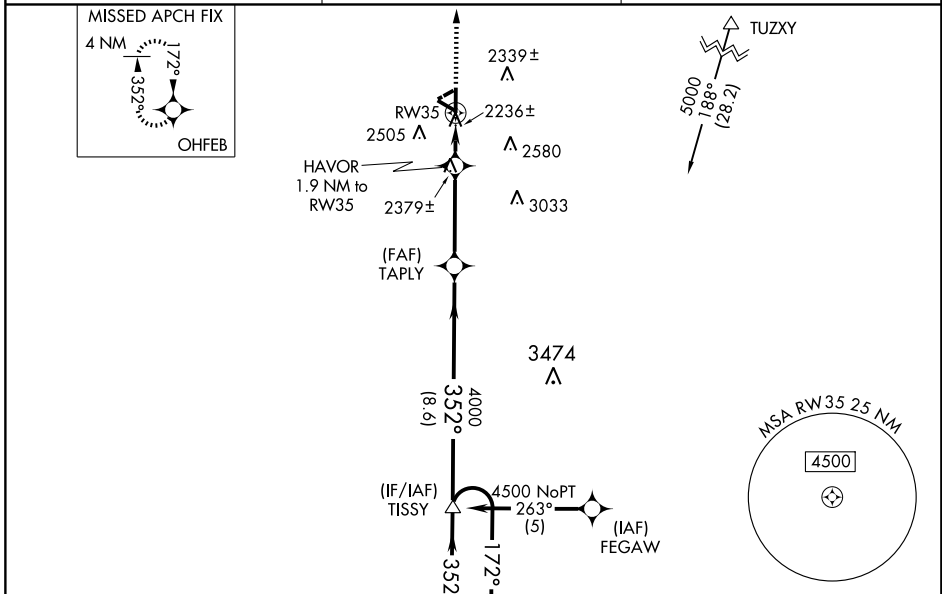
WOODWARD/WEST WOODWARD (WWR)

|  |                        |                             |   |
|--|------------------------|-----------------------------|---|
| WAAS<br>CH <b>40314</b><br><b>W35A</b> | APP CRS<br><b>352°</b> | Rwy Idg<br>TDZE<br>Apt Elev | <b>5502</b><br><b>2189</b><br><b>2189</b> |
|--|------------------------|-----------------------------|---|

**⚠** Baro-VNAV NA when using Gage altimeter setting. For uncompensated Baro-VNAV systems, LNAV/VNAV NA below -19°C (-2°F) or above 44°C (111°F). DME/DME RNP-0.3 NA.  
 Visibility reduction by helicopters NA. When local altimeter setting not received, use Gage altimeter setting and increase all LPA DA 40 feet, all LNAV/VNAV DA 304 feet, all MDA 40 feet. Increase LPV all Cats and LNAV Cat D visibilities ½ mile, LNAV/VNAV all Cats visibility 1 mile.

**MISSED APPROACH:**  
 Climb to 4000 direct OHFEB and hold.

|                                 |  |                                      |
|---------------------------------|--|--------------------------------------|
| <b>AWOS-3</b><br><b>118.425</b> | <b>KANSAS CITY CENTER</b><br><b>126.95 379.2</b> | <b>UNICOM</b><br><b>122.8 (CTAF)</b> |
|---------------------------------|--|--------------------------------------|



| CATEGORY     | A                    | B                    | C                    | D |
|--------------|----------------------|----------------------|----------------------|---|
| LPV DA       | 2470-1 281 (300-1)   |                      |                      |   |
| LNAV/VNAV DA | 2506-1¼ 317 (400-1¼) |                      |                      |   |
| LNAV MDA     | 2700-1 511 (600-1)   | 2700-1½ 511 (600-1½) |                      |   |
| CIRCLING     | 2700-1 511 (600-1)   | 2860-2 671 (700-2)   | 2860-2¼ 671 (700-2¼) |   |

SC-1, 22 OCT 2009 to 19 NOV 2009

SC-1, 22 OCT 2009 to 19 NOV 2009