

MANY, LOUISIANA

APP CRS **282°**
 Rwy Idg **4402**
 TDZE **311**
 Apt Elev **319**

AL-6220 (FAA)

RNAV (GPS) RWY 30

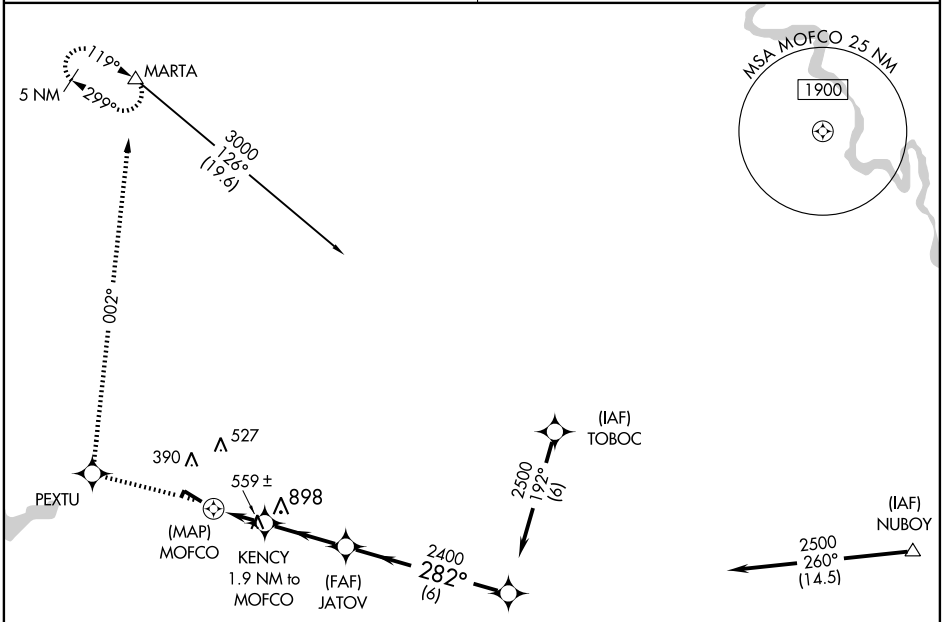
MANY/ HART (3R4)

▼ DME/DME RNP-0.3 NA. Procedure NA at night. Visibility reduction by helicopters NA.
▲ NA Use Fort Polk altimeter setting; when not received, use Natchitoches altimeter setting and increase all MDA 20 feet and increase LNAV and Circling Cat C visibility ¼ mile.

MISSED APPROACH: Climb to 4500 direct PEXTU and right turn via track 002° to MARTA and hold, continue climb in hold to 4500.

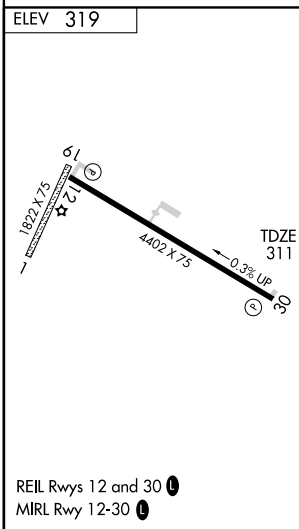
POLK APP CON
123.7 254.8

UNICOM
122.8 (CTAF) 0



SC-4, 22 OCT 2009 to 19 NOV 2009

SC-4, 22 OCT 2009 to 19 NOV 2009



ELEV 319	R-3803A		VGSIs and descent angles not coincident.	
	4500 PEXTU	MARTA	JATOV	OXIDE
KENCY 1.9 NM to MOFCO		MOFCO	OXIDE	2500
1260		2400	282°	Procedure Turn NA
0.5 1.9 NM		3 NM	6 NM	
CATEGORY	A	B	C	D
LNAV MDA	900-1	589 (600-1)	900-1½ 589 (600-1½)	NA
CIRCLING	900-1	581 (600-1)	900-1½ 581 (600-1½)	NA

MANY, LOUISIANA
 Orig 09267

31°33'N - 93°29'W

RNAV (GPS) RWY 30

MANY/ HART (3R4)