

MANY, LOUISIANA

WAAS CH 78015 W12A	APP CRS 117°	Rwy Idg 4402 TDZE 319 Apt Elev 319
---------------------------------	------------------------	---

AL-6220 (FAA)

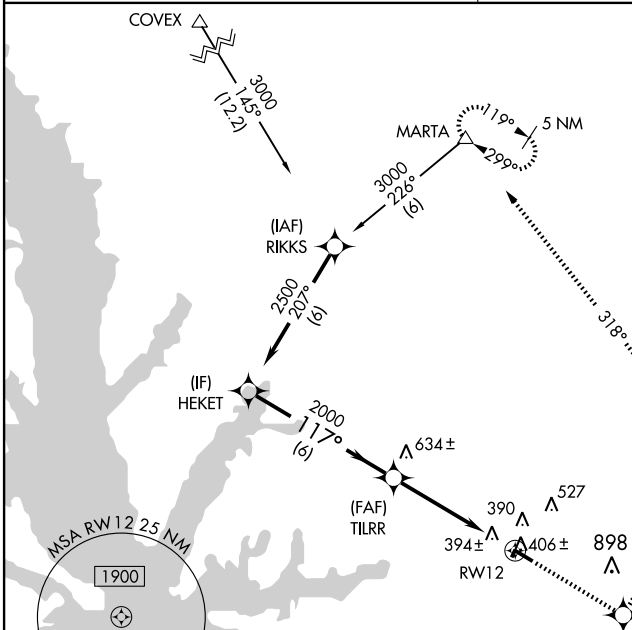
RNAV (GPS) RWY 12

MANY/ HART (3R4)

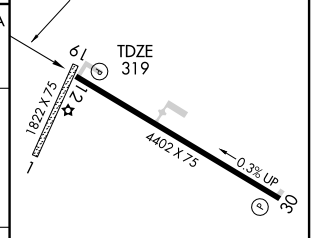
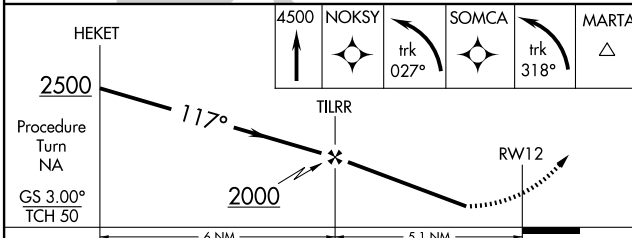
⚠ Baro-VNAV NA. DME/DME RNP-0.3 NA. Procedure NA at night. Visibility reduction by helicopters NA. Use Fort Polk altimeter setting; when not received, use Natchitoches altimeter setting and increase all DA 2 feet and all MDA 20 feet, increase LPV visibility all Cats 1/4 mile, and increase Circling Cat C visibility 1/4 mile.

MISSED APPROACH: Climb to 4500 direct NOKSY and left turn via track 027° to SOMCA and left turn via track 318° to MARTA and hold.

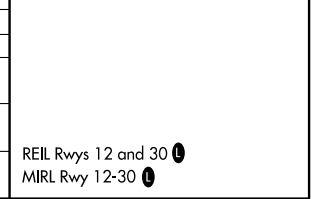
POLK APP CON 123.7 254.8	UNICOM 122.8 (CTAF) 0
------------------------------------	---------------------------------



ELEV 319



CATEGORY	A	B	C	D
LPV DA	713-1 1/4 394 (400-1 1/4)			NA
LNAV/VNAV DA	765-1 1/2 446 (500-1 1/2)			NA
LNAV MDA	820-1 501 (600-1)		820-1 1/2 501 (600-1 1/2)	NA
CIRCLING	900-1 581 (600-1)		900-1 1/2 581 (600-1 1/2)	NA



MANY, LOUISIANA
Orig 09267

31°33'N - 93°29'W

RNAV (GPS) RWY 12

MANY/ HART (3R4)

SC-4, 22 OCT 2009 to 19 NOV 2009

SC-4, 22 OCT 2009 to 19 NOV 2009