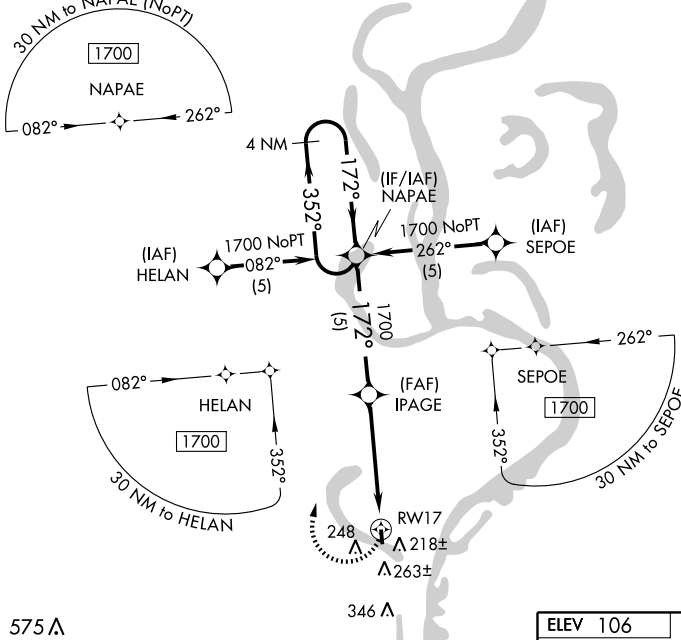


RNAV (GPS) RWY 17
LAKE PROVIDENCE/BYERLEY (0M8)

APP CRS	Rwy Idg	3021
172°	TDZE	106
	Apt Elev	106

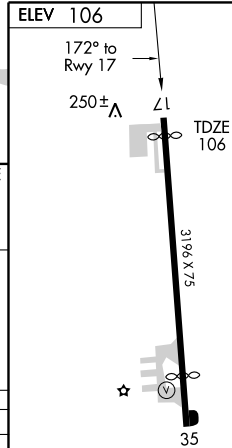
▼ Use Vicksburg Tallulah Regional altimeter setting.
▲ NA GPS or RNP -0.3 required. DME/DME RNP -0.3 NA. MISSED APPROACH: Climbing right turn to 1700 direct NAPAE WP and hold.

MEMPHIS CENTER 132.5 259.1	CTAF 122.9
--------------------------------------	----------------------



SC-4, 22 OCT 2009 to 19 NOV 2009

SC-4, 22 OCT 2009 to 19 NOV 2009



	4 NM Holding Pattern		NAPAE	IPAGE	1700	NAPAE
	1700 ← 352° / 172° → 1700		1700	1700	1700	
	VGS and descent angles not coincident.			3.00° TCH 45		
		5 NM		4.9 NM		
CATEGORY	A	B	C	D		
LNAV MDA	540-1	434 (500-1)	540-1¼ 434 (500-1¼)	NA		
CIRCLING	700-1	594 (600-1)	700-1½ 594 (600-1½)	NA		