

NDB RWY 26

FORSYTH/TILLITT FIELD (1S3)

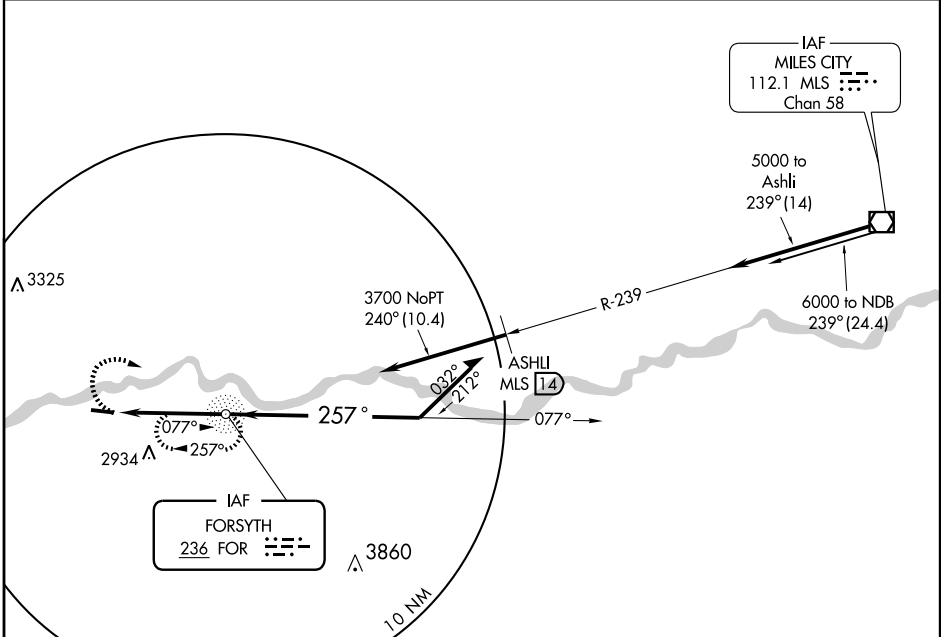
NDB FOR 236	APP CRS 257°	Rwy Idg 4799
		TDZE 2726
		Apt Elev 2727

▲ NA Use Miles City altimeter setting, when not available, except for operators with approved weather reporting services, procedure not authorized.

MISSED APPROACH: Climbing right turn to 4700 direct FOR NDB and hold.

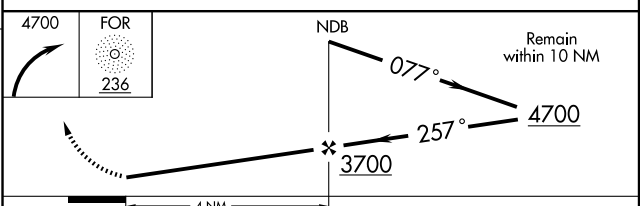
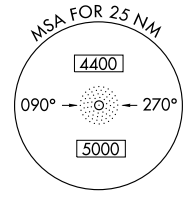
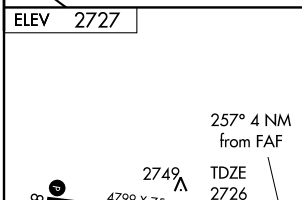
GREAT FALLS RADIO **122.2 255.4**

UNICOM **122.8 (CTAF) 0**



NW-1, 22 OCT 2009 to 19 NOV 2009

NW-1, 22 OCT 2009 to 19 NOV 2009



MIRL Rwy 8-26 0	FAF to MAP 4 NM				
Knots	60	90	120	150	180
Min:Sec	4:00	2:40	2:00	1:36	1:20
CATEGORY	A	B	C	D	
S-26	3340-1	614 (700-1)	3340-1¾ 614 (700-1¾)	3340-2	614 (700-2)
CIRCLING	3340-1 614 (700-1)	3420-1 694 (700-1)	3420-2 694 (700-2)	3440-2½	714 (800-2½)