

NDB RWY 16

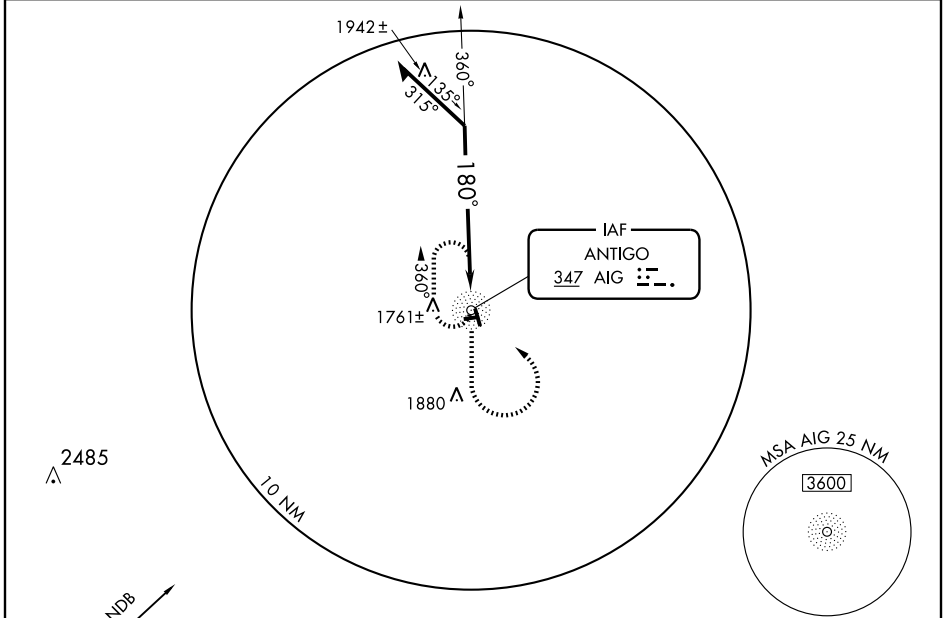
ANTIGO/LANGLADE COUNTY (AIG)

NDB AIG 347	APP CRS 180°	Rwy Idg 4001
		TDZE 1521
		Apt Elev 1521

⚠ When local altimeter setting not received, use Wausau altimeter setting and increase all MDAs 120 feet and increase visibility Cat A ¼ mile, Cat C and D ½ mile.

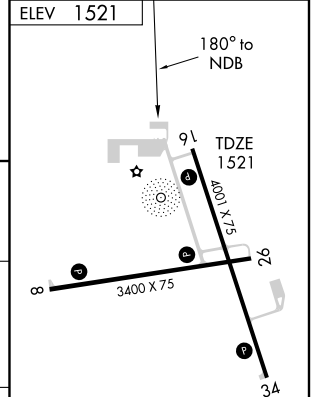
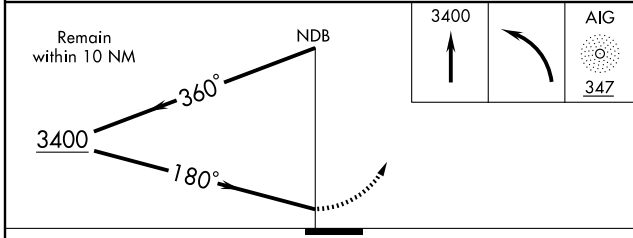
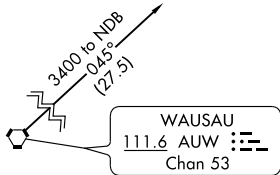
MISSED APPROACH: Climb to 3400 then left turn direct AIG NDB and hold.

AWOS-3 119.075	MINNEAPOLIS CENTER 124.4 317.7	UNICOM 122.8 (CTAF) 📻
--------------------------	--	--



EC-3, 22 OCT 2009 to 19 NOV 2009

EC-3, 22 OCT 2009 to 19 NOV 2009



CATEGORY	A	B	C	D
S-16	2300-1 779 (800-1)	2300-1¼ 779 (800-1¼)	2300-2¼ 779 (800-2¼)	2300-2½ 779 (800-2½)
CIRCLING	2300-1 779 (800-1)	2300-1¼ 779 (800-1¼)	2300-2¼ 779 (800-2¼)	2300-2½ 779 (800-2½)

REIL Rwy 16 and 34 **📻**
MIRL Rwy 16-34 and 8-26 **📻**

Knots	60	90	120	150	180
Min:Sec					