

RNAV (GPS) RWY 28

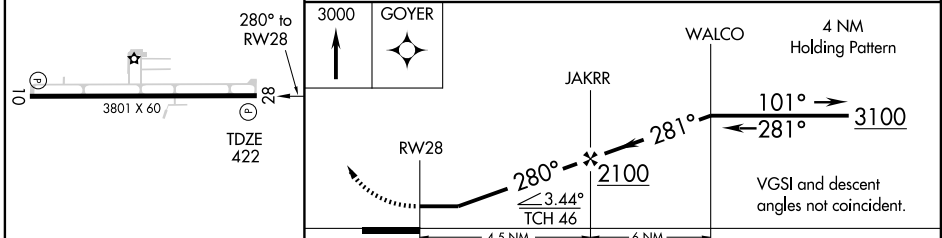
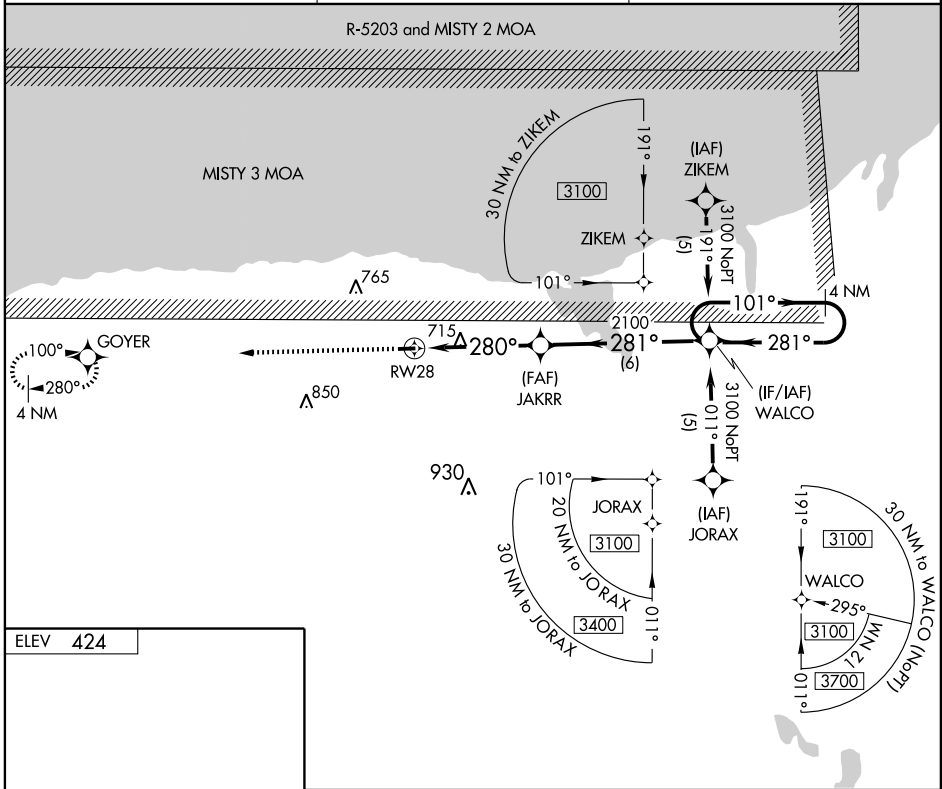
WILLIAMSON-SODUS (SDC)

| | |
|------------------------|------------------------|
| APP CRS 280° | Rwy Idg 3801 |
| TDZE 422 | |
| Apt Elev 424 | |

NA Procedure NA at night. DME/DME RNP-0.3 NA.
 Visibility reduction by helicopters NA. When local altimeter setting not received, use Rochester altimeter setting and increase all MDA 80 ft, LNAV Cat C visibility ¼ mile and circling Cat C visibility ½ mile.

MISSED APPROACH: Climb to 3000 direct GOYER and hold.

| | | |
|------------------------|--|-------------------------------|
| AWOS-3 124.2 | ROCHESTER APP CON 119.55 269.6 | UNICOM 122.8 (CTAF) |
|------------------------|--|-------------------------------|



| CATEGORY | A | B | C | D |
|----------|---------|-------------|---------------------------|----|
| LNAV MDA | 980 - 1 | 558 (600-1) | 980 - 1½ 558 (600-1½) | NA |
| CIRCLING | 980 - 1 | 556 (600-1) | 1020 - 1½ 596 (600-1½) | NA |

NE-2, 22 OCT 2009 to 19 NOV 2009

NE-2, 22 OCT 2009 to 19 NOV 2009