

(NAKED3.NAKED) 07074

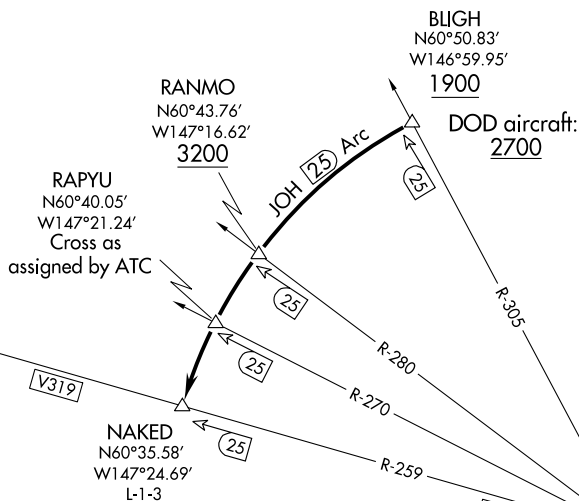
SL-6213 (FAA)

VALDEZ PIONEER FIELD (VDZ) (PAVD)
VALDEZ, ALASKA

NAKED THREE DEPARTURE

ANCHORAGE CENTER
119.3 269.4
JUNEAU RADIO 122.2
CTAF 122.9

TAKEOFF MINIMUMS:
Rwy 6, 24, 2000-3 (DOD aircraft 3500-3)
NA at night.



NOTE: Do not proceed southbound beyond BLIGH without ATC clearance. DME REQUIRED.

AK, 22 OCT 2009 to 17 DEC 2009

AK, 22 OCT 2009 to 17 DEC 2009

NOTE: Chart not to scale.

DEPARTURE ROUTE DESCRIPTION

Proceed in visual conditions from Valdez Airport to BLIGH (JOH R-305/25 DME) to cross BLIGH at or above 1900' (visual conditions must be maintained from takeoff until established over BLIGH at or above 1900' MSL) (DOD aircraft: cross BLIGH at or above 2700'). Proceed southbound on JOH 25 DME ARC to NAKED; cross RANMO at or above 3200'. Cross RPYU as assigned by ATC. Thence via (assigned route).

NAKED THREE DEPARTURE

(NAKED3.NAKED) 07074

VALDEZ, ALASKA
VALDEZ PIONEER FIELD (VDZ) (PAVD)