

SELMER, TENNESSEE

AL-6211 (FAA)

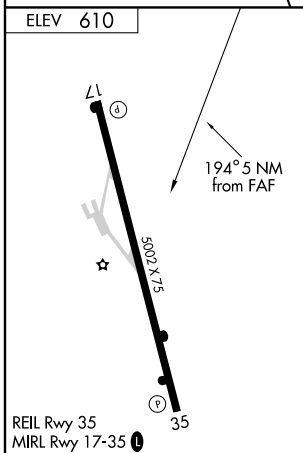
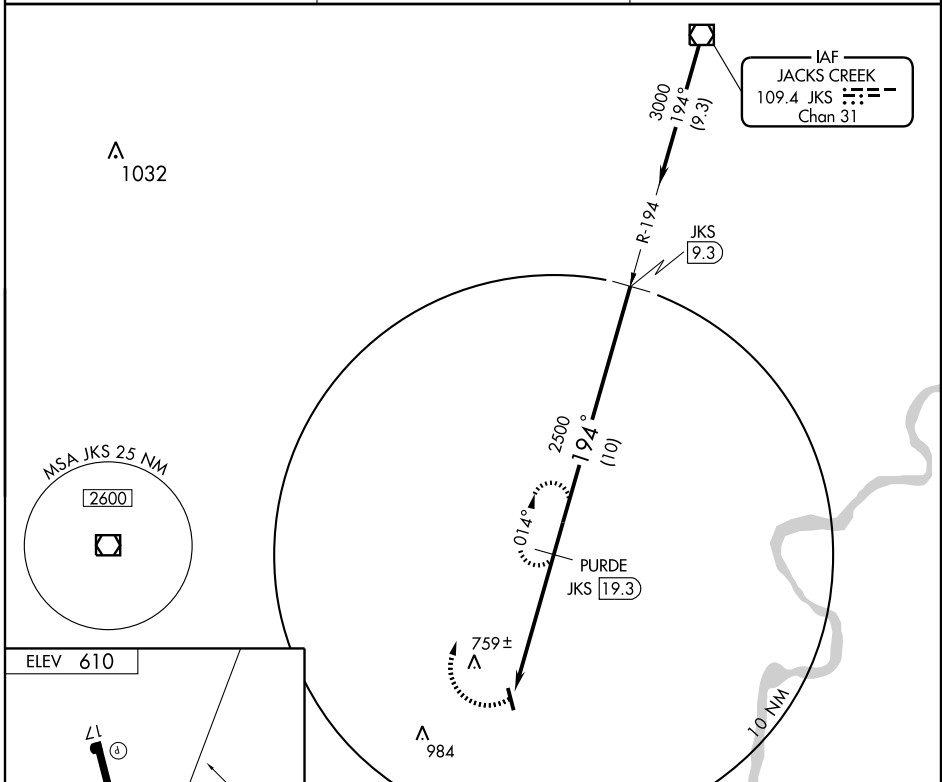
VOR/DME JKS 109.4 Chan 31	APP CRS 194°	Rwy Idg TDZE Apt Elev N/A N/A 610
---	------------------------	--

VOR/DME-A

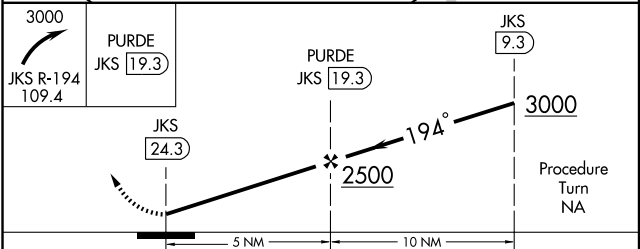
SELMER/ROBERT SIBLEY (SZY)

▼ Obtain local altimeter setting on CTAF; when not received, use Jackson altimeter setting.
▲ NA MISSED APPROACH: Climbing right turn to 3000 via JKS R-194 to PURDE/19.3 DME and hold.

AWOS-3 118.425	MEMPHIS CENTER 124.35 239.3	UNICOM 122.7 (CTAF) 0
--------------------------	---------------------------------------	---------------------------------



ELEV 610
REIL Rwy 35 MIRL Rwy 17-35 0
Knots 60 90 120 150 180
Min:Sec



CATEGORY	A	B	C	D
CIRCLING	1060-1 450 (500-1)	1080-1¼ 470 (500-1½)	1080-1½ 470 (500-1½)	1160-2 550 (600-2)
JACKSON ALTIMETER SETTING MINIMUMS				
CIRCLING	1160-1 550 (600-1)	1180-1¼ 570 (600-1½)	1180-1½ 570 (600-1½)	1180-2 570 (600-2)

SELMER, TENNESSEE
Orig 08269

35° 12' N - 88° 30' W

VOR/DME-A

SELMER/ROBERT SIBLEY (SZY)

SE-1, 22 OCT 2009 to 19 NOV 2009

SE-1, 22 OCT 2009 to 19 NOV 2009