

RNAV (GPS) RWY 35

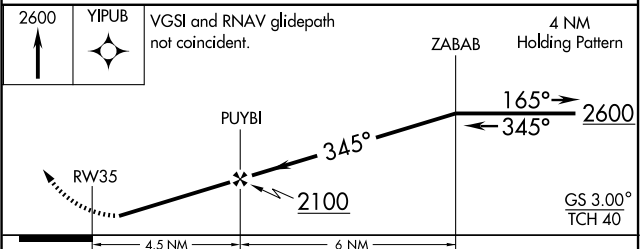
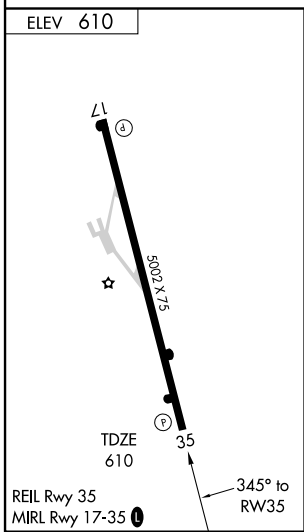
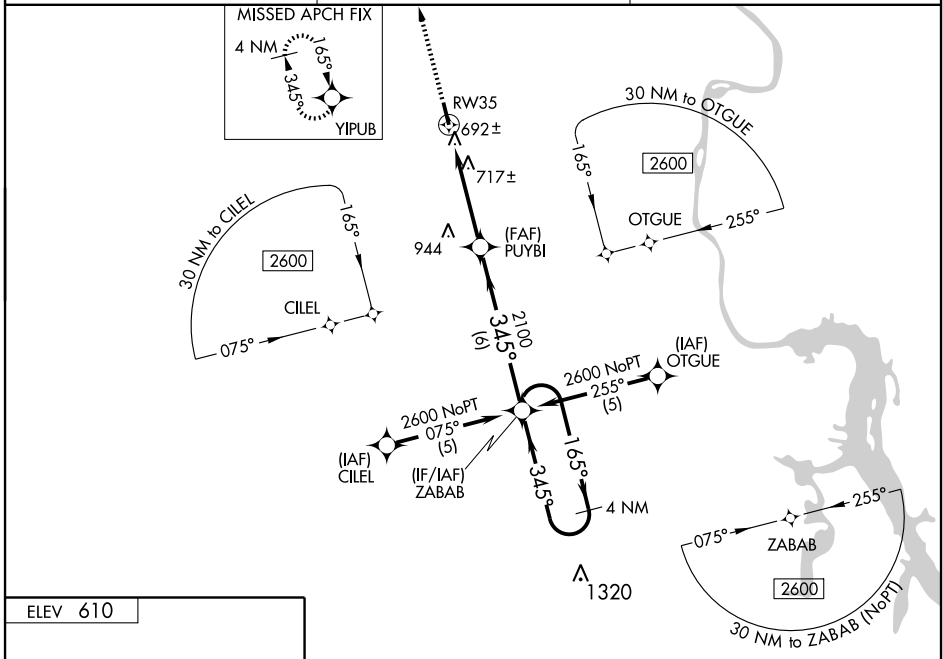
SELMER/ROBERT SIBLEY (SZY)

WAAS CH 86608 W35A	APP CRS 345°	Rwy Idg 5002 TDZE 610 Apt Elev 610
--	------------------------	--

NA When local altimeter setting not received, use McKellar-Sipes Rgnl altimeter setting and increase all DA 97 feet and all MDA 100 feet, LPV all Cats. and LNAV Cats. C and D visibilities ¼ mile, and LNAV/VNAV all Cats. visibility ½ mile. Baro-VNAV NA when using McKellar-Sipes Rgnl altimeter setting. Visibility reduction by helicopters NA. For uncompensated Baro-VNAV systems, LNAV/VNAV NA below -16° C (4° F) or above 47° C (116° F). DME/DME RNP-0.3 NA.

MISSED APPROACH: Climb to 2600 direct YIPUB and hold.

AWOS-3 118.425	MEMPHIS CENTER 124.35 239.3	UNICOM 122.7 (CTAF) 0
--------------------------	---------------------------------------	---------------------------------



CATEGORY	A	B	C	D
LPV DA	944-1¼ 334 (400-1¼)			
LNAV/VNAV DA	986-1¼ 376 (400-1¼)			
LNAV MDA	980-1 370 (400-1)			980-1¼ 370 (400-1¼)
CIRCLING	1060-1 450 (500-1)	1080-1 470 (500-1)	1080-1½ 470 (500-1½)	1160-2 550 (600-2)