

SELMER, TENNESSEE

AL-6211 (FAA)

# RNAV (GPS) RWY 17

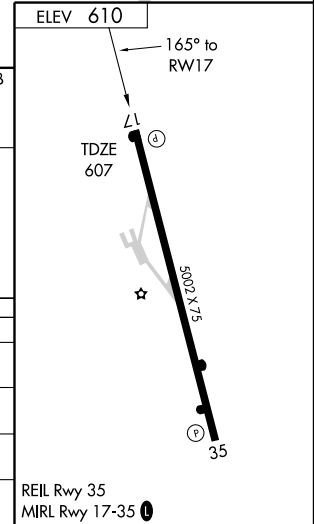
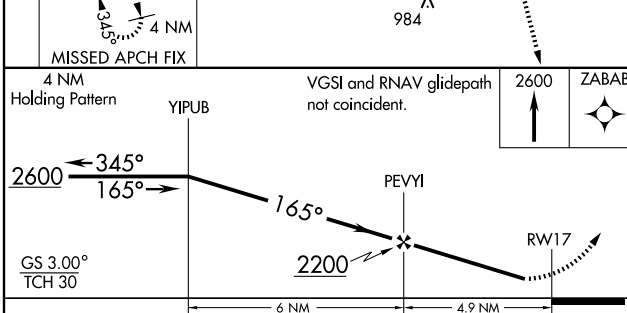
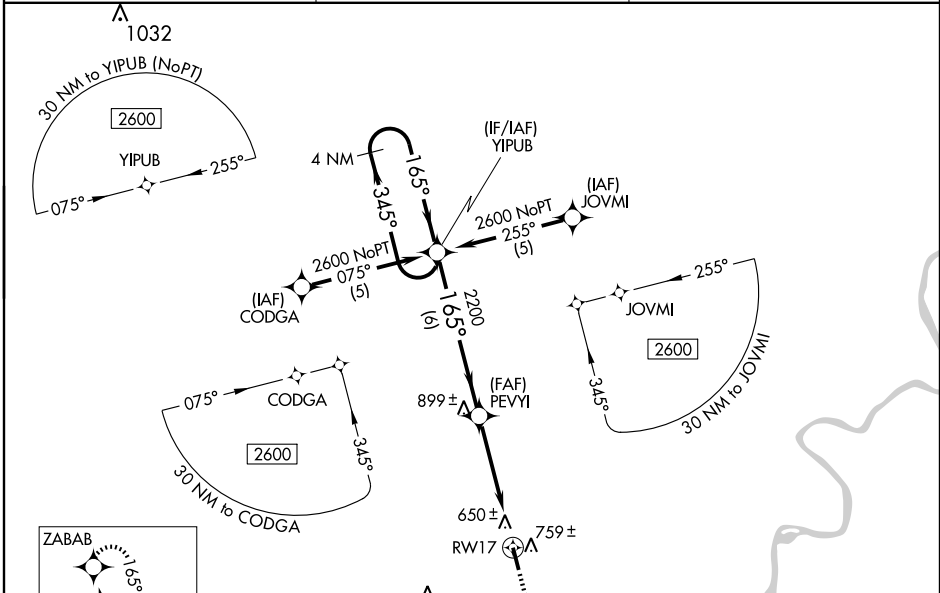
SELMER/ROBERT SIBLEY (SZY)

WAAS CH <b>40408</b> <b>W17A</b>	APP CRS <b>165°</b>	Rwy Idg TDZE Apt Elev	<b>5002</b> <b>607</b> <b>610</b>
--	------------------------	-----------------------------	---

**⚠** When local altimeter setting not received, use McKellar-Sipes Rgnl altimeter setting and increase all DA 97 feet and all MDA 100 feet, LPV and LNAV/VNAV all Cats. and LNAV Cat. C visibilities ¼ mile, and LNAV Cat. D visibility ½ mile. Baro-VNAV NA when using McKellar-Sipes Rgnl altimeter setting. For uncompensated Baro-VNAV systems, LNAV/VNAV NA below -16° C (4° F) or above 47° C (116° F). DME/DME RNP-0.3 NA. Visibility reduction by helicopters NA.

**MISSED APPROACH:** Climb to 2600 direct ZABAB and hold.

AWOS-3 <b>118.425</b>	MEMPHIS CENTER <b>124.35 239.3</b>	UNICOM <b>122.7 (CTAF)</b>
--------------------------	---------------------------------------	-------------------------------



CATEGORY	A	B	C	D
LPV DA	861-1 254 (300-1)			
LNAV/VNAV DA	1055-1¾ 448 (500-1¾)			
LNAV MDA	1020-1 413 (500-1)	1020-1¼ 413 (500-1¼)		
CIRCLING	1060-1 450 (500-1)	1080-1 470 (500-1)	1080-1½ 470 (500-1½)	1160-2 550 (600-2)

SELMER, TENNESSEE  
Orig 08269

35° 12'N-88° 30'W

# RNAV (GPS) RWY 17

SE-1, 22 OCT 2009 to 19 NOV 2009

SE-1, 22 OCT 2009 to 19 NOV 2009