

RNAV (GPS) RWY 9

BROOKSVILLE/HERNANDO COUNTY (BKV)

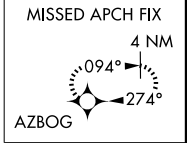
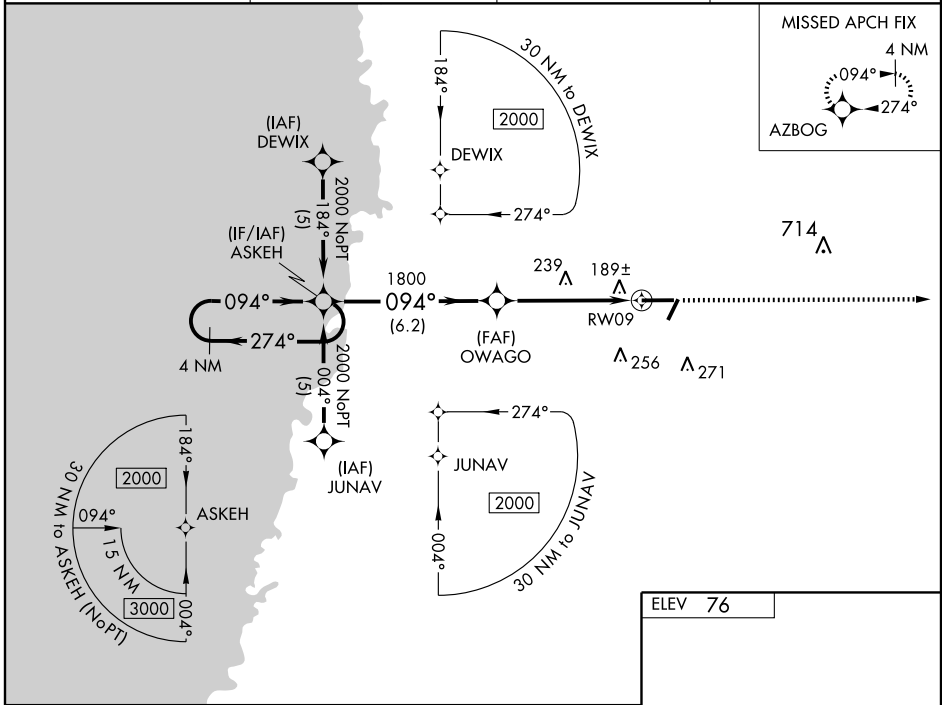
APP CRS	Rwy Idg	7002
094°	TDZE	76
	Apt Elev	76

Baro-VNAV NA when using Tampa Intl altimeter setting. For uncompensated Baro-VNAV systems, LNAV/VNAV NA below -15° C (5° F) or above 48° C (118° F). DME/DME RNP-0.3 NA. When local altimeter setting not received, use Tampa Intl altimeter setting and increase all DA 77 feet and all MDA 80 feet, increase LNAV/VNAV all Cats. and LNAV Cat. C visibility ¼ mile. For inoperative MALSR increase LNAV Cat. D visibility to 1¼ mile.

MALSR

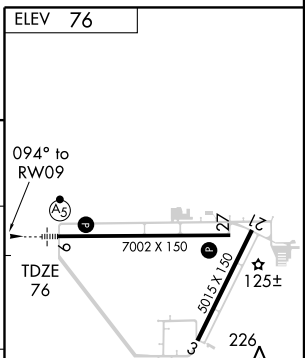
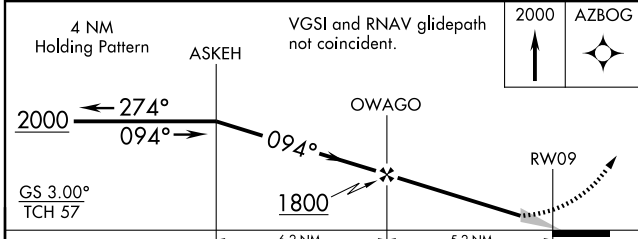
MISSED APPROACH:
Climb to 2000 direct AZBOG and hold.

ASOS 134.725	TAMPA APP CON 125.3 316.05	CLNC DEL 119.125	UNICOM 123.0 (CTAF) 0
------------------------	--------------------------------------	----------------------------	---------------------------------



SE-3, 22 OCT 2009 to 19 NOV 2009

SE-3, 22 OCT 2009 to 19 NOV 2009



CATEGORY	A	B	C	D
LNAV/VNAV DA	491-1 415 (500-1)			
LNAV MDA	500-½	424 (500-½)	500-¾ 424 (500-¾)	500-1 424 (500-1)
CIRCLING	540-1	464 (500-1)	540-1½ 464 (500-1½)	640-2 564 (600-2)

MIRL Rwys 3-21 and 9-27 0

RNAV (GPS) RWY 9