

BROOKSVILLE, FLORIDA

AL-6210 (FAA)

WAAS CH <b>86408</b> <b>W27A</b>	APP CRS <b>274°</b>	Rwy Idg TDZE Apt Elev	<b>7002</b> <b>69</b> <b>76</b>
----------------------------------------	------------------------	-----------------------------	---------------------------------------

# RNAV (GPS) RWY 27

BROOKSVILLE/HERNANDO COUNTY (BKV)

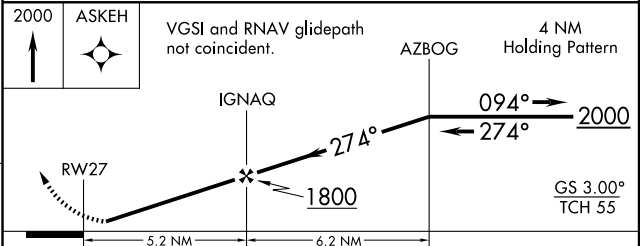
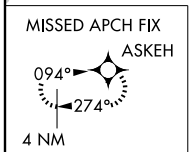
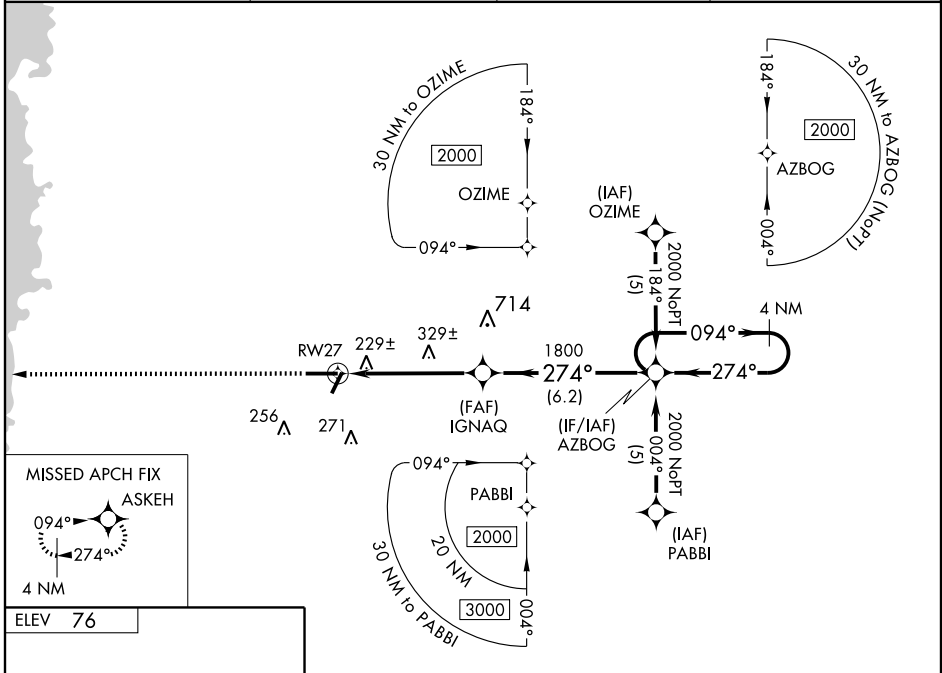
Baro-VNAV NA when using Tampa Intl altimeter setting. For uncompensated Baro-VNAV systems, LNAV/VNAV NA below -15° C (5° F) or above 48° C (118° F). DME/DME RNP-0.3 NA. Visibility reduction by helicopters NA. When local altimeter setting not received, use Tampa Intl altimeter setting and increase all DA 77 feet and MDA 80 feet, and increase LPV, LNAV/VNAV all Cats. and LNAV Cat. D visibility ¼ mile.

**MISSED APPROACH:**  
Climb to 2000 direct ASKEH and hold.

ASOS <b>134.725</b>	TAMPA APP CON <b>125.3 316.05</b>	CLNC DEL <b>119.125</b>	UNICOM <b>123.0 (CTAF) 0</b>
------------------------	--------------------------------------	----------------------------	---------------------------------

SE-3, 22 OCT 2009 to 19 NOV 2009

SE-3, 22 OCT 2009 to 19 NOV 2009



CATEGORY	A	B	C	D
LPV DA		442-1¼	373 (400-1¼)	
LNAV/VNAV DA		540-1¾	471 (500-1¾)	
LNAV MDA	580-1	511 (600-1)	580-1½	511 (600-1½)
CIRCLING	580-1	504 (600-1)	580-1½ 504 (600-1½)	640-2 564 (600-2)

BROOKSVILLE, FLORIDA  
Amdt 1 09183

BROOKSVILLE/HERNANDO COUNTY (BKV)  
**RNAV (GPS) RWY 27**

28° 28'N-82° 27'W