

BROOKSVILLE, FLORIDA

AL-6210 (FAA)

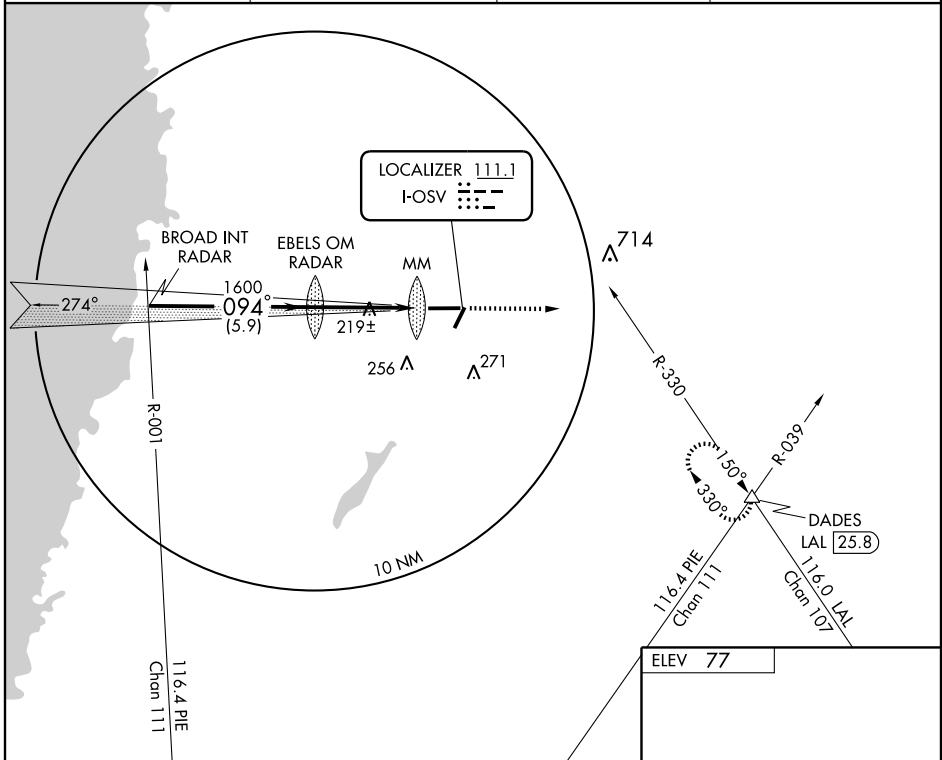
ILS RWY 9

BROOKSVILLE/HERNANDO COUNTY (BKV)

LOC I-OSV 111.1	APP CRS 094°	Rwy Idg TDZE Apt Elev	7002 77 77
---------------------------	------------------------	-----------------------------	---------------------------------------

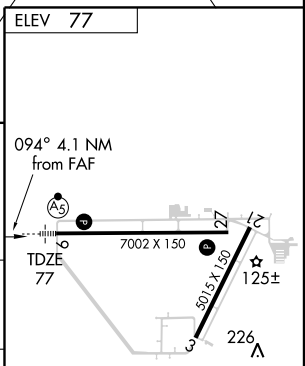
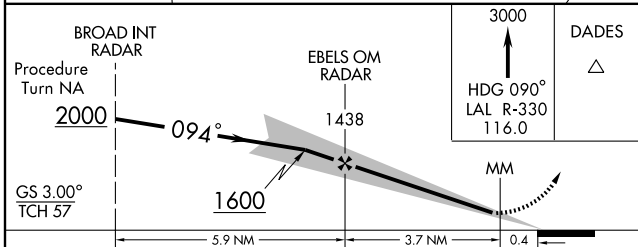
NA RADAR REQUIRED	MALSR 	MISSED APPROACH: Climb to 3000 via heading 090° and LAL R-330 to DADES Int and hold.	
		ASOS 134.725	TAMPA APP CON 125.3 316.05

ASOS 134.725	TAMPA APP CON 125.3 316.05	CINC DEL 119.125	UNICOM 123.0 (CTAF)
------------------------	--------------------------------------	----------------------------	-------------------------------



SE-3, 22 OCT 2009 to 19 NOV 2009

SE-3, 22 OCT 2009 to 19 NOV 2009



Procedure Turn NA	2000			
GS 3.00° TCH 57	1600			
	5.9 NM	3.7 NM	0.4	
CATEGORY	A	B	C	D
S-ILS 9	277-1/2		200 (200-1/2)	
S-LOC 9	480-1/2 403 (500-1/2)		480-3/4 403 (500-3/4)	
CIRCLING	540-1 463 (500-1)		540-1 1/2 640-2 463 (500-1 1/2) 563 (600-2)	

ELEV 77	094° 4.1 NM from FAF	7002 X 150	27	125±	226
MIRL Rwy 3-21 and 9-27					
FAF to MAP 4.1 NM					
Knots	60	90	120	150	180
Min:Sec	4:06	2:44	2:03	1:38	1:22

BROOKSVILLE, FLORIDA
Amdt 2A 09183

BROOKSVILLE/HERNANDO COUNTY (BKV)
ILS RWY 9

28° 28' N-82° 27' W