

RNAV (GPS) RWY 5

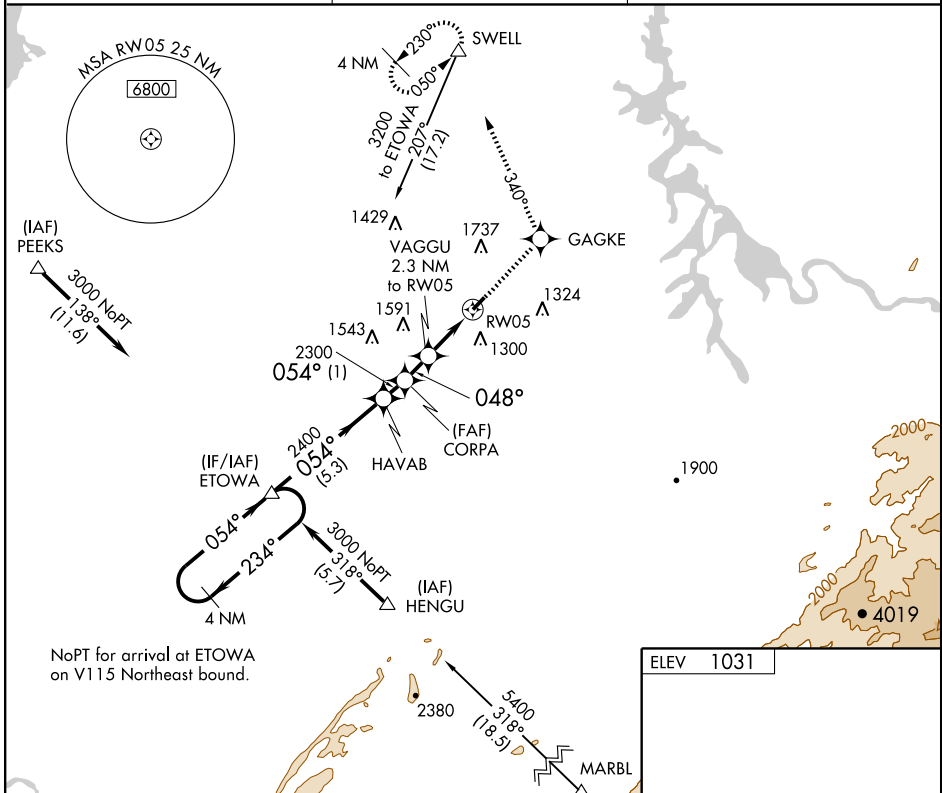
MADISONVILLE/ MONROE COUNTY (MNV)

APP CRS	Rwy Idg	3641
048°	TDZE	1031
	Apt Elev	1031

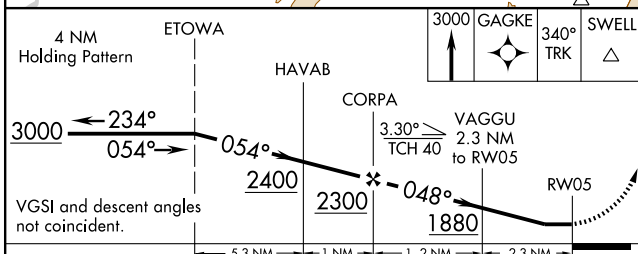
⚠ Circling to Rwy 23 NA at night. When VGSI inop, procedure NA at night. Circling NA NW of Rwy 5-23. DME/DME RNP-0.3 NA. Visibility reduction by helicopters NA.
⚠ NA When local altimeter setting not received, use McGhee-Tyson altimeter setting and increase all MDA 80 feet and increase LNAV and Circling Cat. C visibilities ¼ mile.

MISSED APPROACH:
 Climb to 3000 direct GAGKE and via 340° track to SWELL and hold.

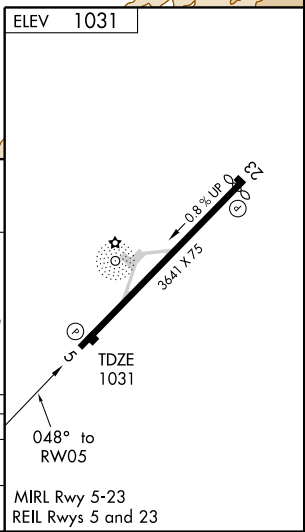
AWOS-3 118.475	KNOXVILLE APP CON 123.9 353.6	UNICOM 123.0 (CTAF)
--------------------------	-----------------------------------------	-------------------------------



NoPT for arrival at ETOWA on V115 Northeast bound.



CATEGORY	A	B	C	D
LNVA MDA	1780-1 749 (800-1)	1780-1¼ 749 (800-1¼)	1780-2¼ 749 (800-2¼)	NA
CIRCLING	1780-1 749 (800-1)	1780-1¼ 749 (800-1¼)	1780-2¼ 749 (800-2¼)	NA



RNAV (GPS) RWY 5

SE-1, 22 OCT 2009 to 19 NOV 2009

SE-1, 22 OCT 2009 to 19 NOV 2009