

# RNAV (GPS) RWY 23

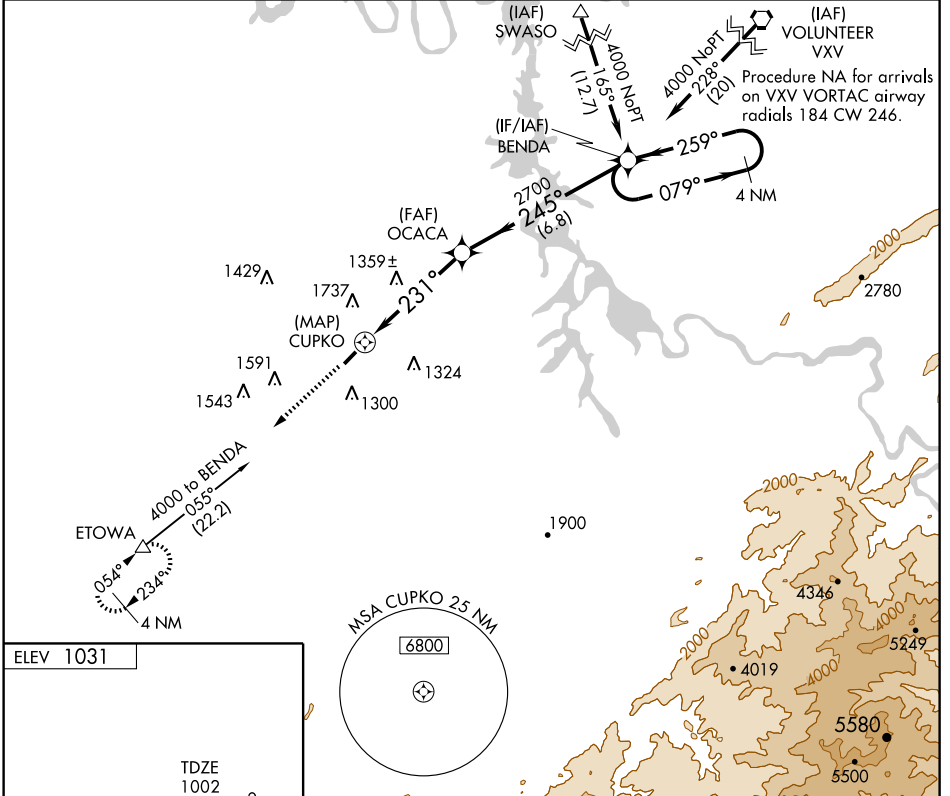
MADISONVILLE/ MONROE COUNTY (MNV)

APP CRS <b>231°</b>	Rwy Idg <b>3501</b>
	TDZE <b>1002</b>
	Apt Elev <b>1031</b>

**NA** Circling NA NW of Rwy 5-23. DME/DME RNP-0.3 NA. Procedure NA at night. Visibility reduction by helicopters NA. When local altimeter setting not received, use McGhee-Tyson altimeter setting and increase all MDA 80 feet and increase LNAV and Circling Cat. C visibilities ½ mile.

**MISSED APPROACH:** Climb to 3000 direct ETOWA and hold.

AWOS-3 <b>118.475</b>	KNOXVILLE APP CON <b>123.9 353.6</b>	UNICOM <b>123.0 (CTAF)</b>
--------------------------	---	-------------------------------



SE-1, 22 OCT 2009 to 19 NOV 2009

SE-1, 22 OCT 2009 to 19 NOV 2009

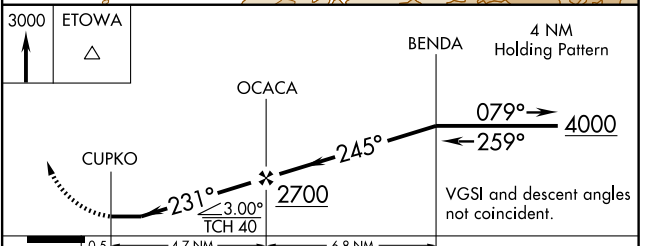
ELEV 1031

TDZE 1002

3641 x 75

0.9% UP

MIRL Rwy 5-23  
REIL Rws 5 and 23



CATEGORY	A	B	C	D
LNAV MDA	1620-1	618 (600-1)	1620-1¾ 618 (600-1¾)	NA
CIRCLING	1620-1	589 (600-1)	1620-1¾ 589 (600-1¾)	NA