

GPS RWY 3

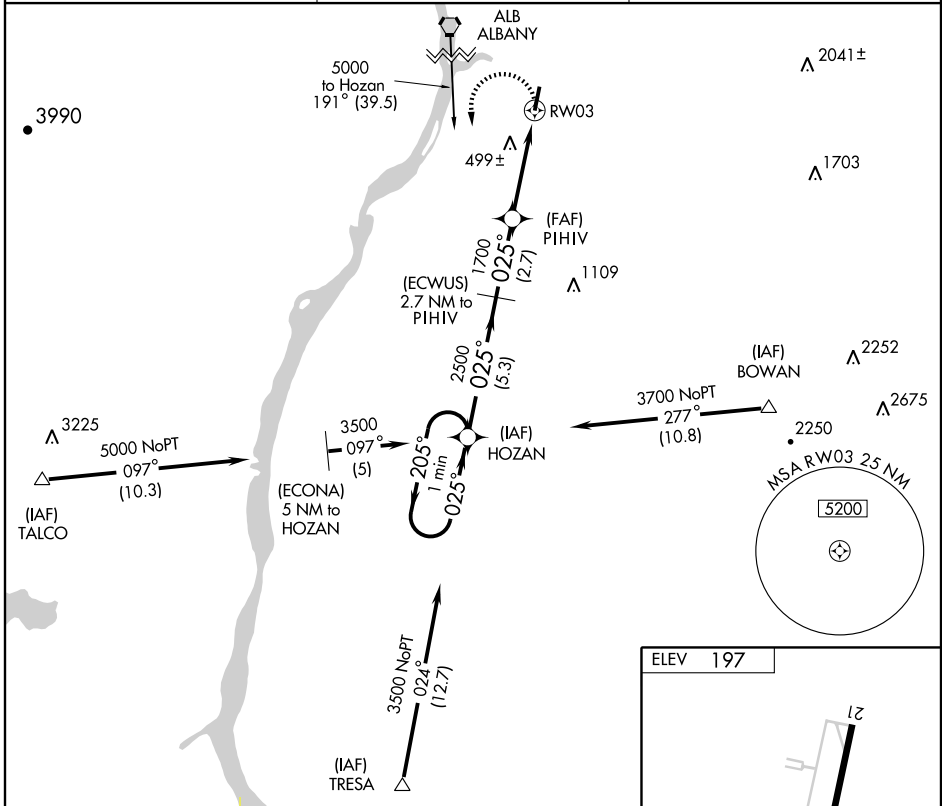
HUDSON/COLUMBIA COUNTY (1B1)

APP CRS	Rwy Idg	5350
025°	TDZE	197
	Apt Elev	197

NA If local altimeter setting not received, use Albany altimeter setting and increase all MDAs 80 feet.

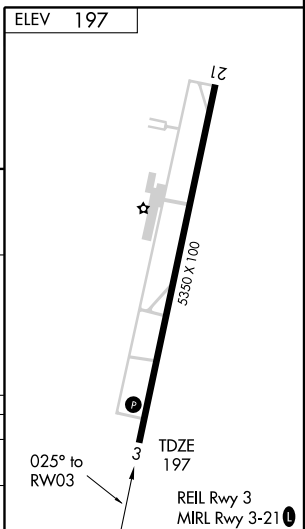
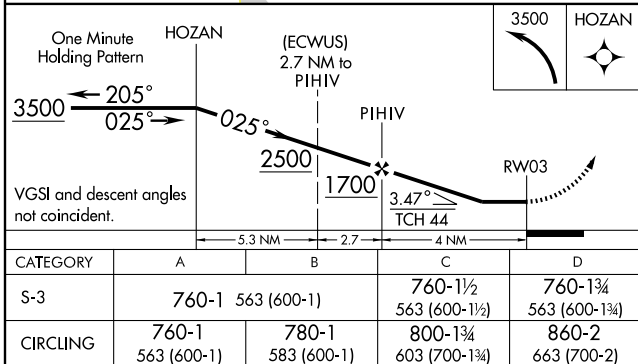
MISSED APPROACH: Climbing left turn to 3500 direct HOZAN WP and hold.

AWOS-3 133.525	ALBANY APP CON 132.825 307.2	UNICOM 123.05 (CTAF)
--------------------------	--	--------------------------------



NE-2, 22 OCT 2009 to 19 NOV 2009

NE-2, 22 OCT 2009 to 19 NOV 2009



GPS RWY 3