

VORTAC CHS <b>113.5</b> Chan <b>82</b>	APP CRS <b>185°</b>	Rwy Idg TDZE Apt Elev <b>73</b>	<b>N/A</b> <b>N/A</b> <b>73</b>
--	------------------------	--	---------------------------------------

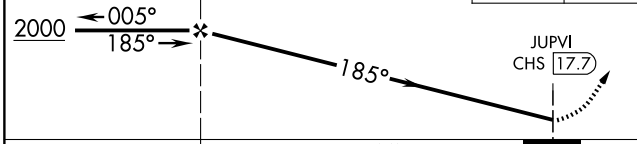
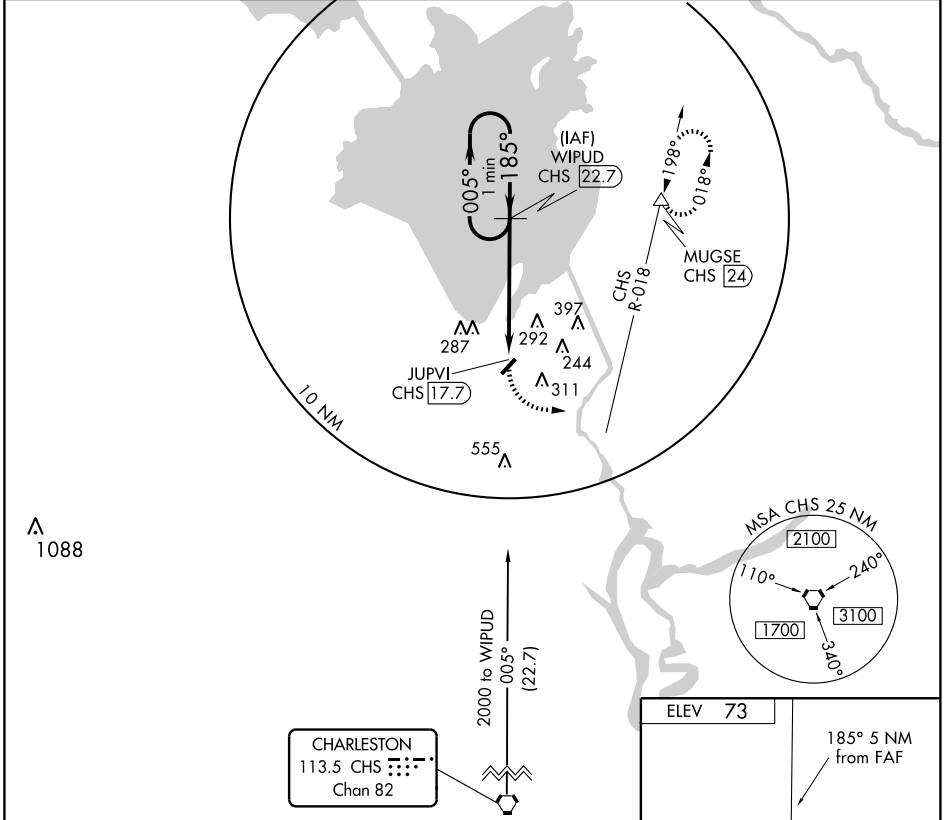
# VOR/DME-A

MONCK'S CORNER/ BERKELEY COUNTY (MKS)

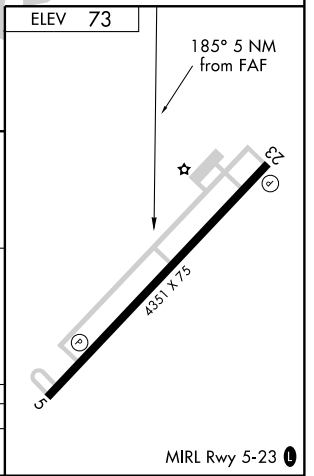
**NA** Circling to Rwy 23 NA at night. When local altimeter setting not received, use Charleston AFB/Intl altimeter setting and increase all MDA 60 feet and Cat. C visibility ¼ mile.

**MISSED APPROACH:** Climbing left turn to 2000 via heading 050° and CHS R-018 to MUGSE/CHS 24 DME and hold.

AWOS-3 <b>119.175</b>	CHARLESTON APP CON <b>135.8 379.925</b>	UNICOM <b>123.05 (CTAF)</b>
--------------------------	--	--------------------------------



CATEGORY	A	B	C	D
CIRCLING	560-1 487 (500-1)	620-1 547 (600-1)	620-1½ 547 (600-1½)	640-2 567 (600-2)



SE-2, 22 OCT 2009 to 19 NOV 2009

SE-2, 22 OCT 2009 to 19 NOV 2009